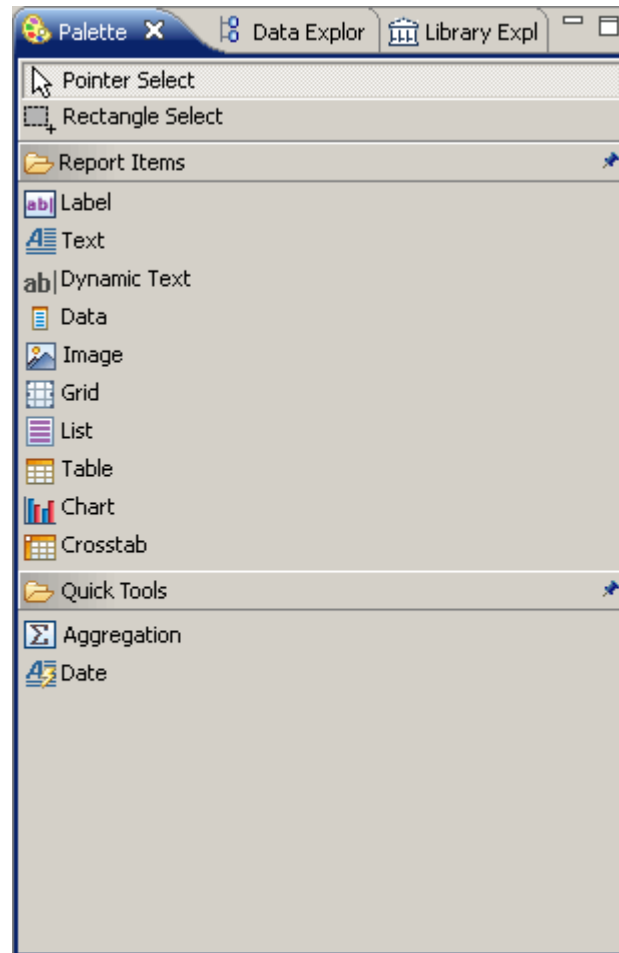


Aggregation Builder

Scenario 1: Drag n Drop from Quick Tools in Palette

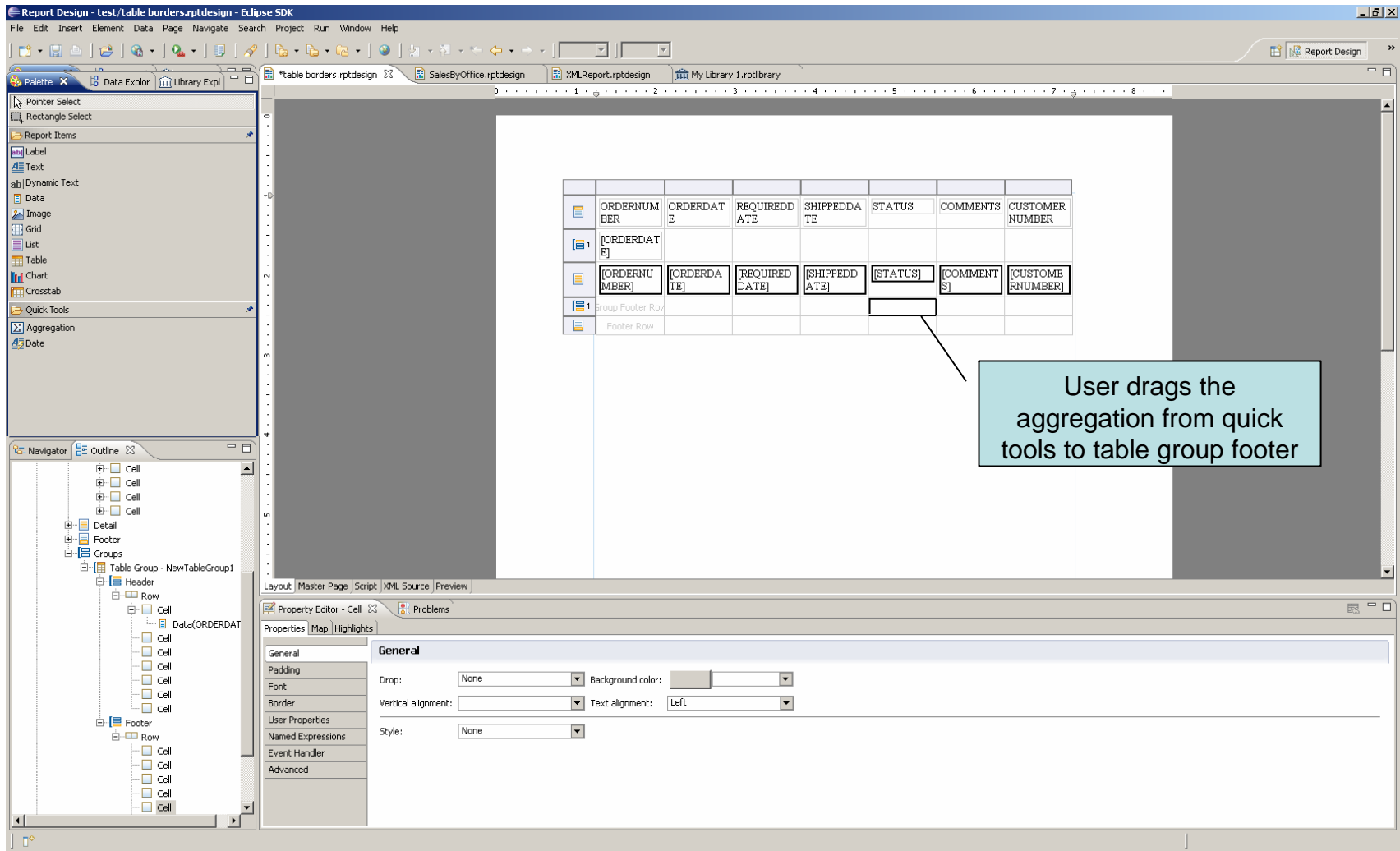
Palette with Quick Tools



Note:

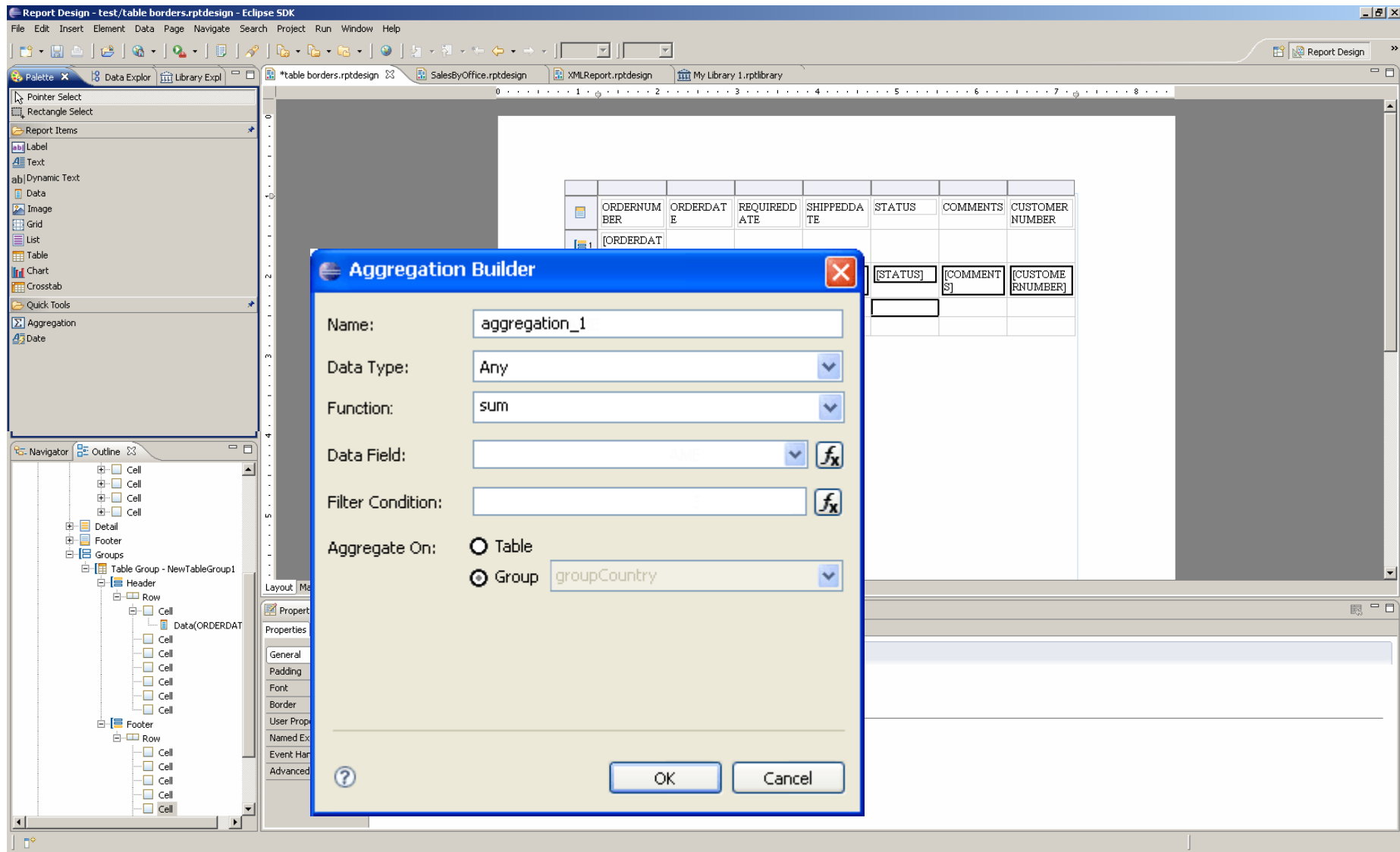
1. Quick Tools section is proposed in palette that will list quick functions.
2. Aggregation and Date are proposed functions under Quick tools.

Dragging Aggregation from Quick Tools to Table Group “groupCountry” header



Note:

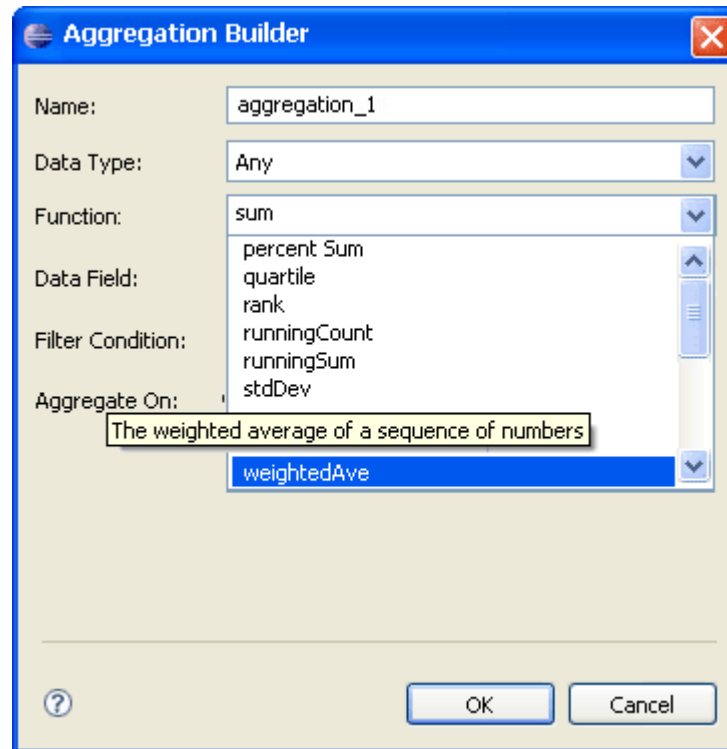
1. User Drags the Aggregation to Table group footer.



Note:

1. Aggregate on is read only field as user drops the aggregation at a particular desired cell.
2. Default function is 'SUM' as it is most common used function.
3. As 'SUM' does not take any argument, 'Argument' fields will not be shown.

Choosing function



Note:

1. Function Drop Down will list all the available functions from BIRT Functions: Totals
2. Hover on listed functions will give a tool tip of what that function does.

Argument

Aggregation Builder

Name: aggregation_1

Data Type: Any

Function: weightedAve

Data Field: dataSetRow["SALES"]

Weight:

Filter Condition:

Aggregate On: ☐ Table ☒ Group groupCountry

OK Cancel

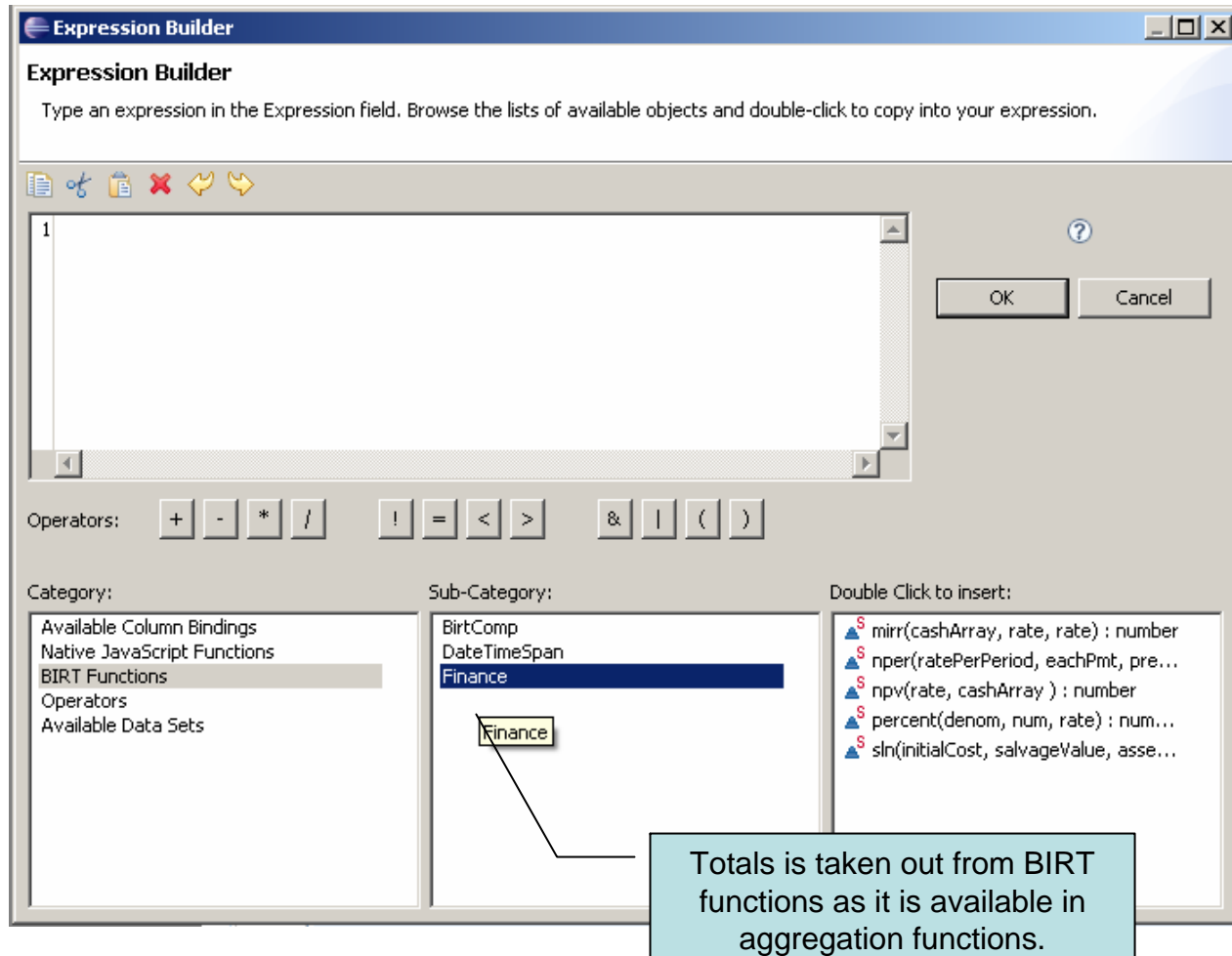
If the selected function can contain more than one argument, all the arguments will be listed.

Clicking on "... " button will open expression builder to give argument if applicable

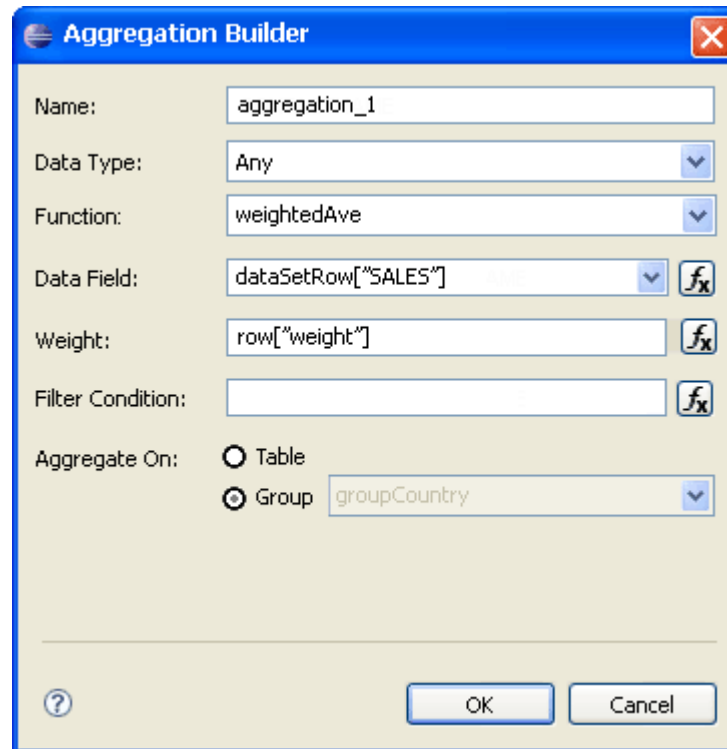
Note:

1. If the selected function can have an argument, 'Argument' field will be available.
2. If the user has not put a value for a required argument, OK should be disabled.

Expression Builder



Dialog having the argument




The image shows a software dialog box titled "Aggregation Builder". It contains several input fields and options for configuring an aggregation. The fields are: "Name:" with the value "aggregation_1"; "Data Type:" with a dropdown menu set to "Any"; "Function:" with a dropdown menu set to "weightedAve"; "Data Field:" with a dropdown menu set to "dataSetRow[\"SALES\"]" and a function icon (fx); "Weight:" with a text field containing "row[\"weight\"]" and a function icon (fx); "Filter Condition:" with an empty text field and a function icon (fx); and "Aggregate On:" with two radio buttons, "Table" (unselected) and "Group" (selected), followed by a dropdown menu set to "groupCountry". At the bottom left is a help icon (question mark), and at the bottom right are "OK" and "Cancel" buttons.


Aggregation Builder


Name: aggregation_1

Data Type: Any


Function: weightedAve

Data Field: dataSetRow["SALES"] 

Weight: row["weight"] 

Filter Condition: 

Aggregate On: ☐ Table ☒ Group groupCountry

 OK Cancel

Sample Report Design after Aggregation

Aggregation defined is represented by the symbol and given name

Scenario 2: Editing Aggregation

table borders.rptdesign SalesbyOffice.rptdesign JMLReport.rptdesign My Library 1.rptlibrary

0 1 2 3 4 5 6 7 8

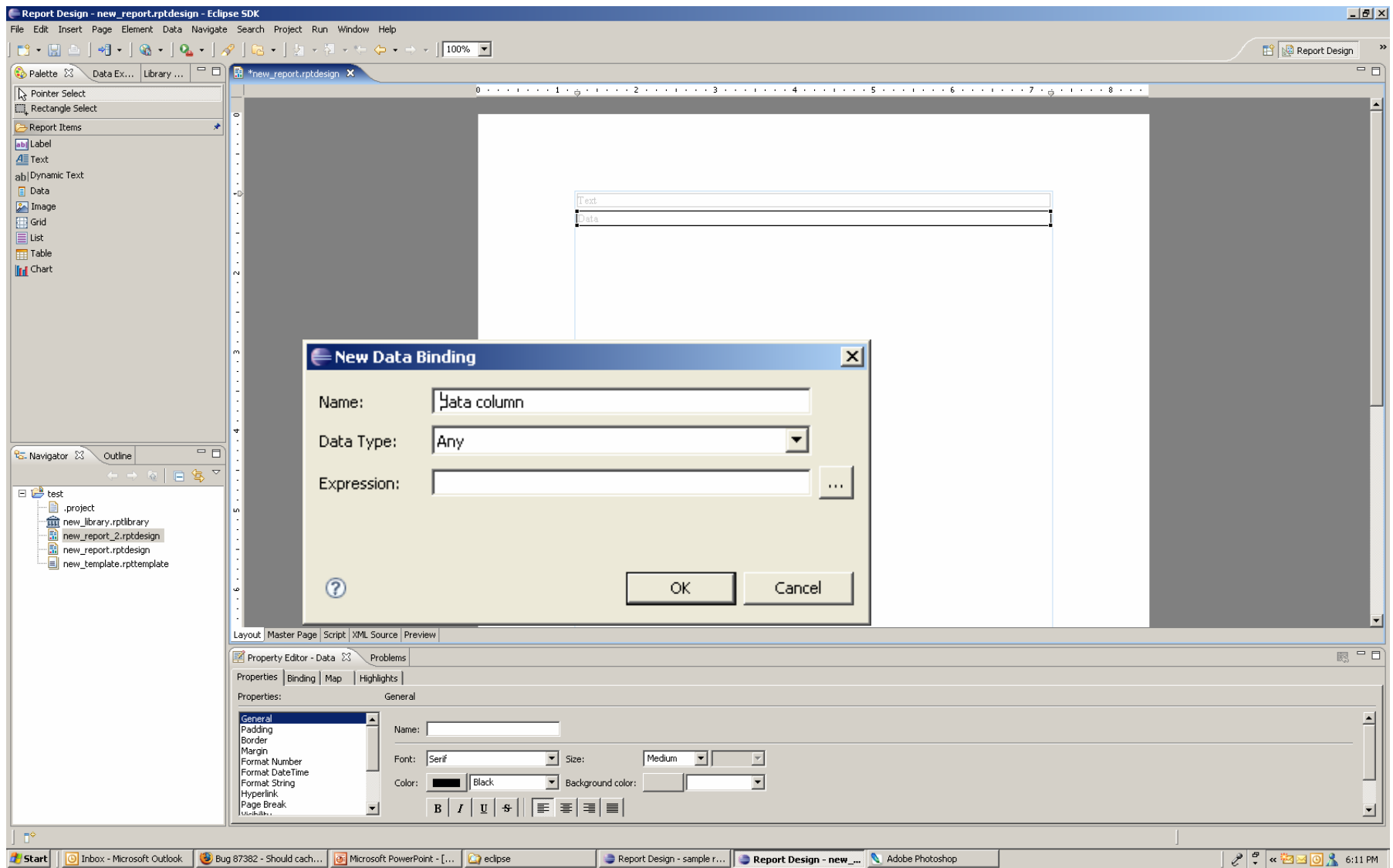
| | ORDERNUM BER | ORDERDAT E | REQUIRED ATE | SHEPPEDDA TE | STATUS | COMMENTS | CUSTOMER NUMBER |
|--|-------------------|-----------------|--------------------|-------------------|----------|----------------|----------------------|
| | [ORDERDAT E] | | | | | | |
| | [ORDERNU MBER] | [ORDERDA TE] | [REQUIRED DATE] | [SHIPPEDD ATE] | [STATUS] | [COMMENT S] | [CUSTOME RNUMBER] |
| | Group Footer Row | | | | Σ Aggreg | | |
| | Footer Row | | | | | | |

Layout Master Page Script JML Source Preview

Double clicking the cell will open the aggregation dialog

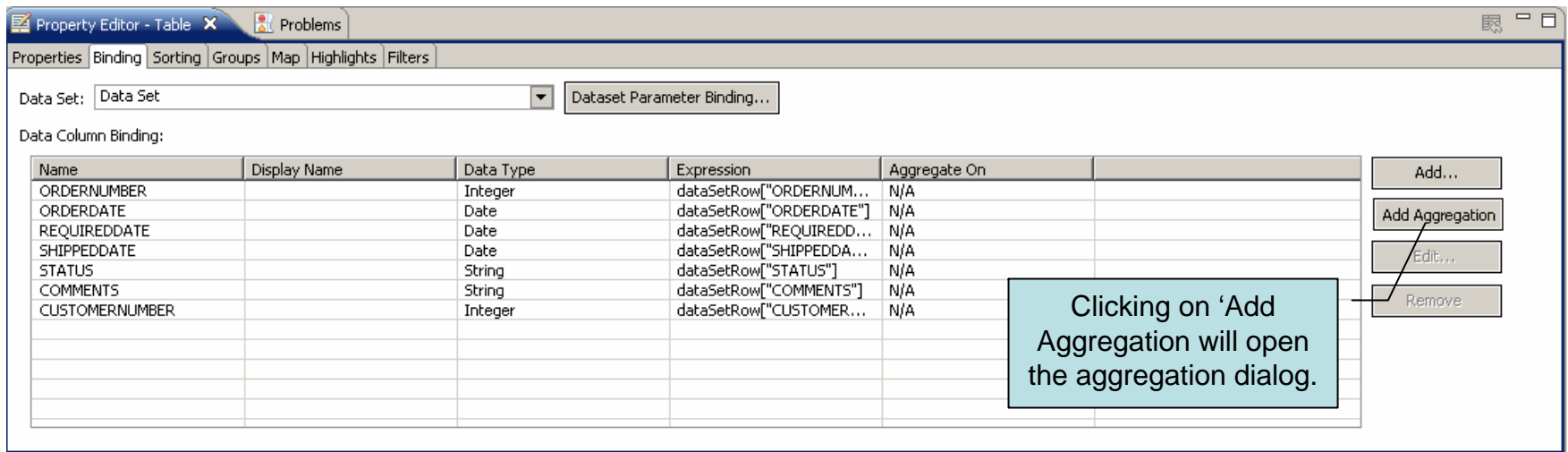
Scenario 3: Adding Data Item from Palette

Drag and drop data item from palette



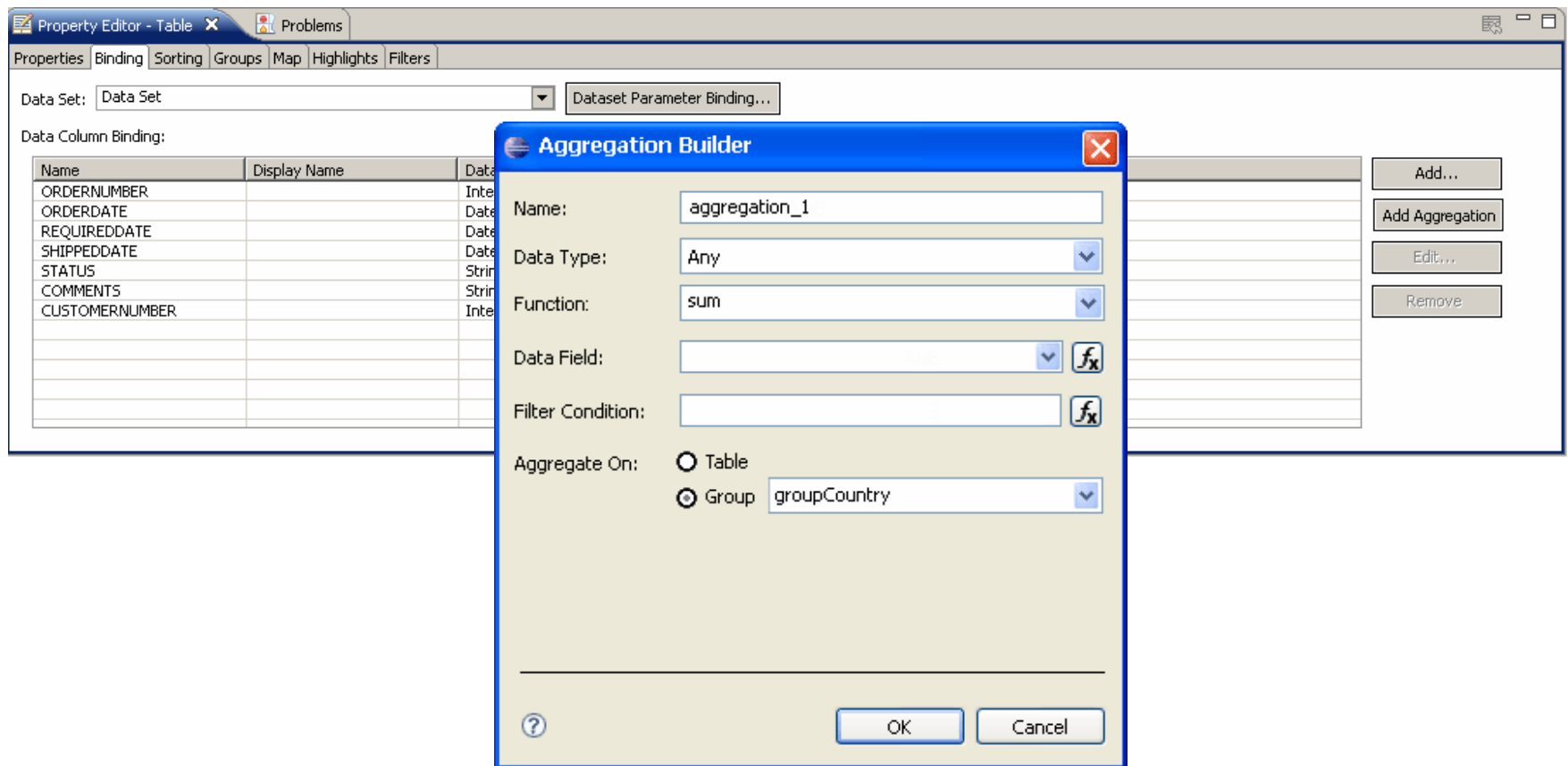
Scenario 4: Adding Aggregate from Data Binding Tab

Data Binding Dialog



Note:

1. Add a new button in property editor "Add Aggregation". It will work the same as scenario 1



Note:

1. The flow is the same as scenario 1