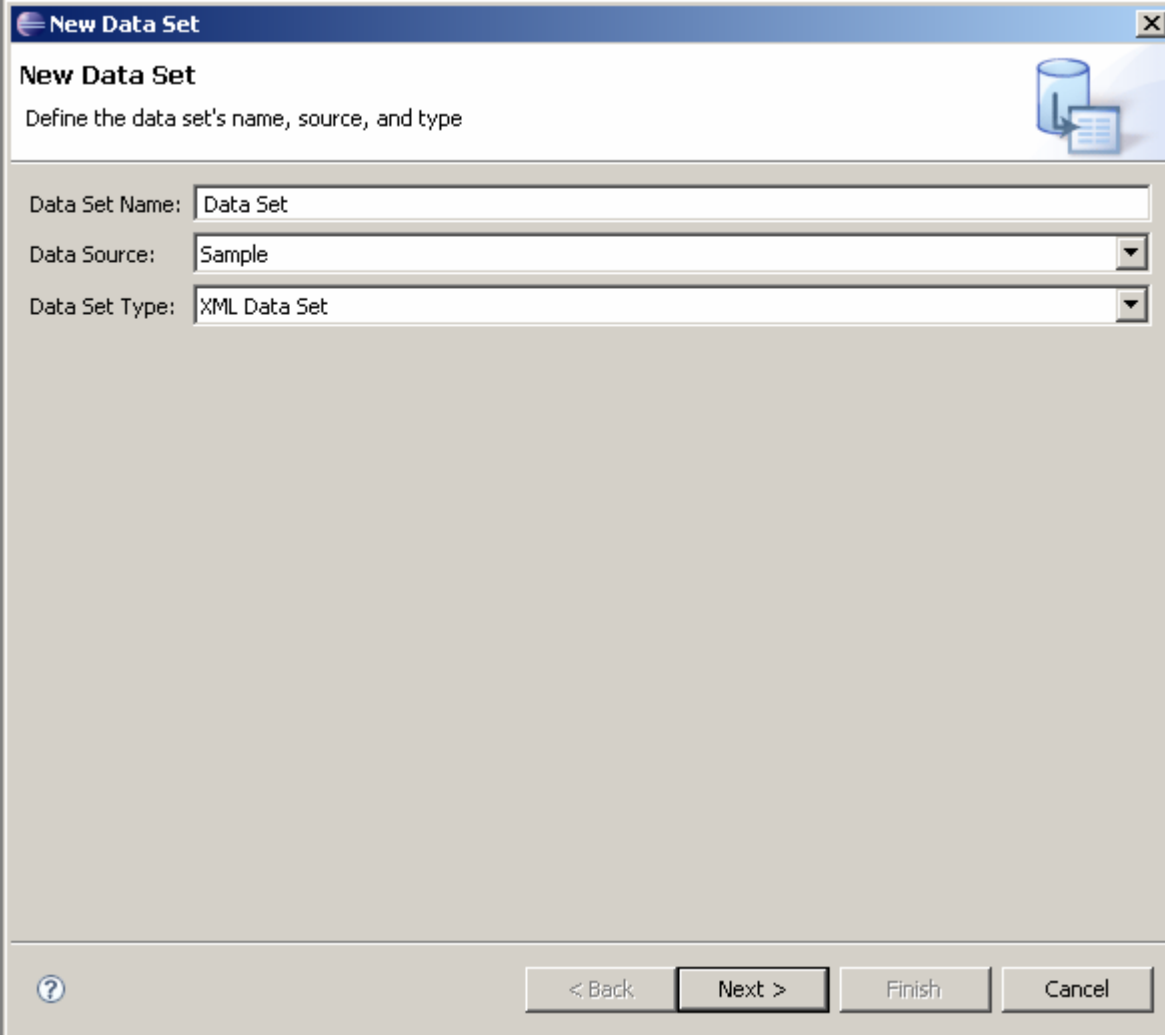


XML Data Set Wizard

UI enhancements to current XML dataset wizard are proposed for easier user experience and to maintain consistency in flow with other data set wizards.

Select Data Set Type and Data Source



The image shows a Windows-style dialog box titled "New Data Set". The title bar is blue with a standard Windows icon on the left and a close button (X) on the right. Below the title bar, the text "New Data Set" is displayed in bold, followed by the instruction "Define the data set's name, source, and type". To the right of this text is an icon depicting a blue cylinder (database) with a document and an arrow pointing to it. The main area of the dialog contains three input fields: "Data Set Name:" with a text box containing "Data Set", "Data Source:" with a dropdown menu showing "Sample", and "Data Set Type:" with a dropdown menu showing "XML Data Set". At the bottom of the dialog, there is a row of four buttons: a help button (question mark icon), "< Back", "Next >", and "Cancel". The "Next >" button is highlighted with a black border.


New Data Set

Define the data set's name, source, and type

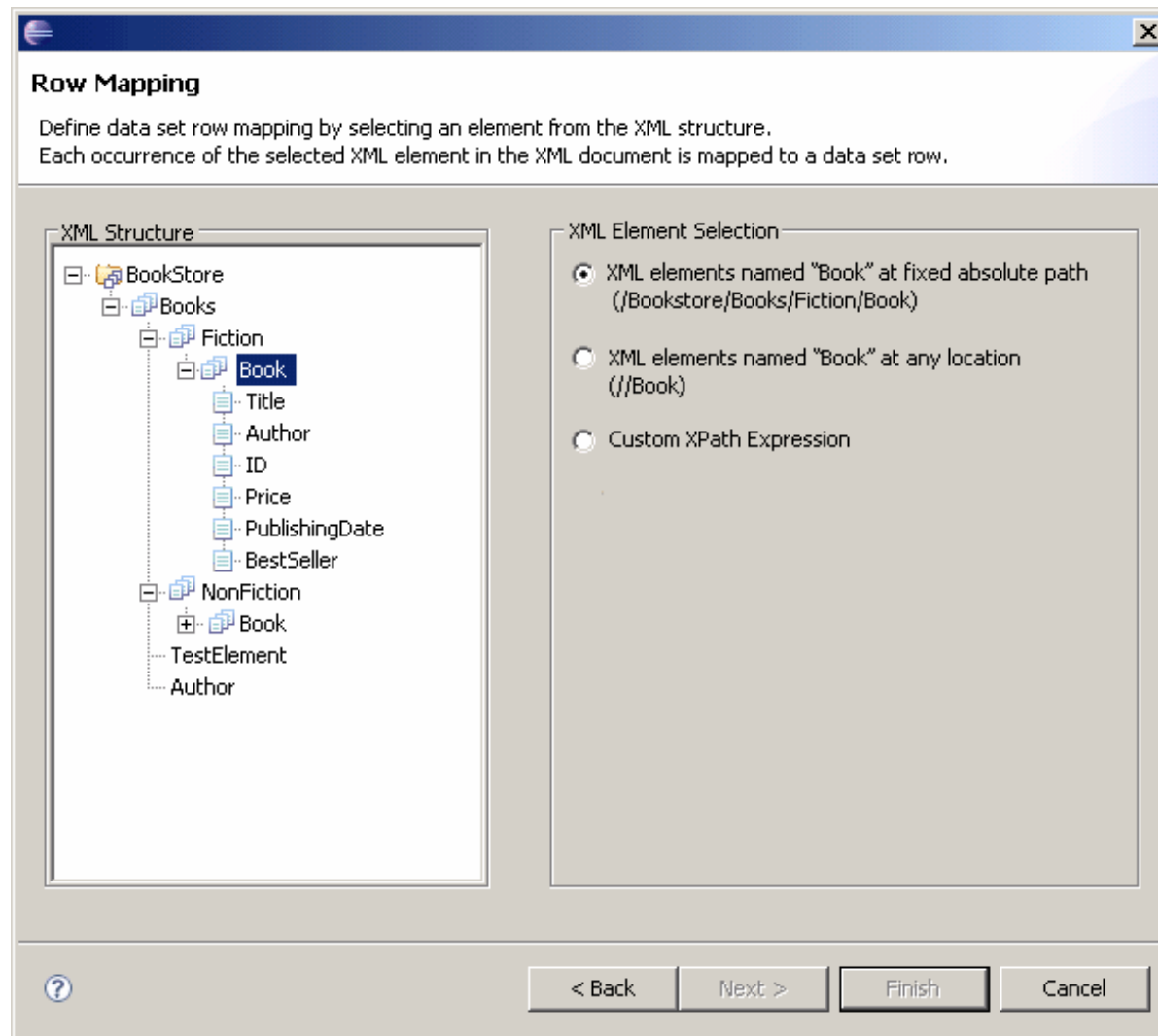
Data Set Name:

Data Source:

Data Set Type:

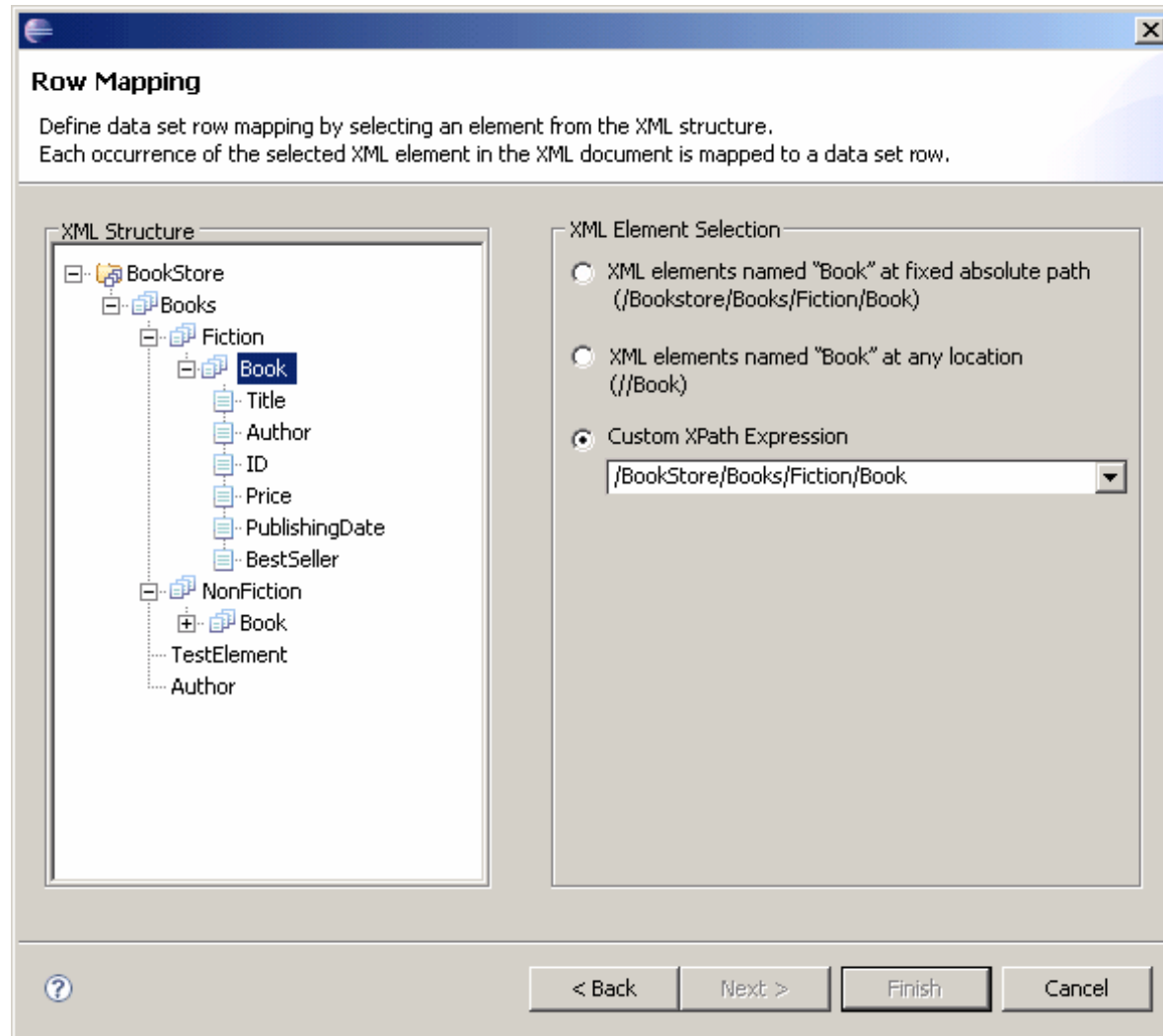


Row Mapping



Note: There has been some user confusion over what "Table mapping" means. For clarity, renaming the dialog to "Row Mapping" is being suggested. An additional pop up dialog that asks for XML Element Selection has been removed, and changes to the text is made.

Row Mapping: custom expression



The dialog box is titled "Row Mapping" and contains instructions on how to define data set row mapping. It is divided into two main sections: "XML Structure" and "XML Element Selection". The "XML Structure" section shows a tree view of an XML document with the following structure: BookStore (Books (Fiction (Book (Title, Author, ID, Price, PublishingDate, Bestseller), NonFiction (Book (TestElement, Author))). The "XML Element Selection" section has three radio buttons: "XML elements named 'Book' at fixed absolute path (/Bookstore/Books/Fiction/Book)", "XML elements named 'Book' at any location (//Book)", and "Custom XPath Expression". The "Custom XPath Expression" option is selected, and the text box below it contains the XPath expression "/BookStore/Books/Fiction/Book". At the bottom of the dialog, there are four buttons: "< Back", "Next >", "Finish", and "Cancel".

Row Mapping


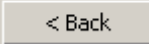


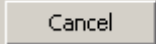
Define data set row mapping by selecting an element from the XML structure.
Each occurrence of the selected XML element in the XML document is mapped to a data set row.

XML Structure

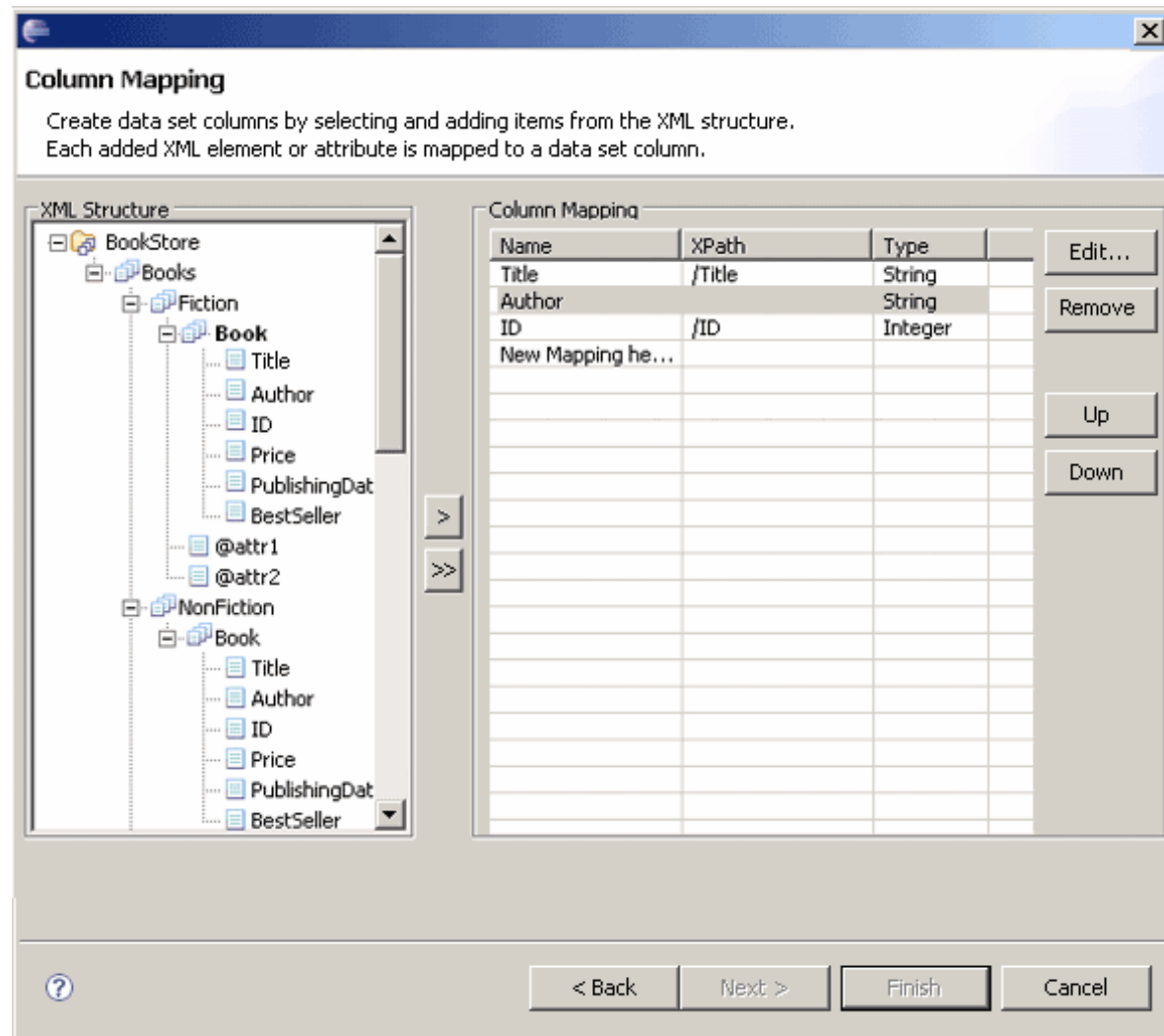
- BookStore
 - Books
 - Fiction
 - Book
 - Title
 - Author
 - ID
 - Price
 - PublishingDate
 - BestSeller
 - NonFiction
 - Book
 - TestElement
 - Author

XML Element Selection

- ☐ XML elements named "Book" at fixed absolute path (/Bookstore/Books/Fiction/Book)
- ☐ XML elements named "Book" at any location (//Book)
- ☒ Custom XPath Expression
 - /BookStore/Books/Fiction/Book

Column Mapping

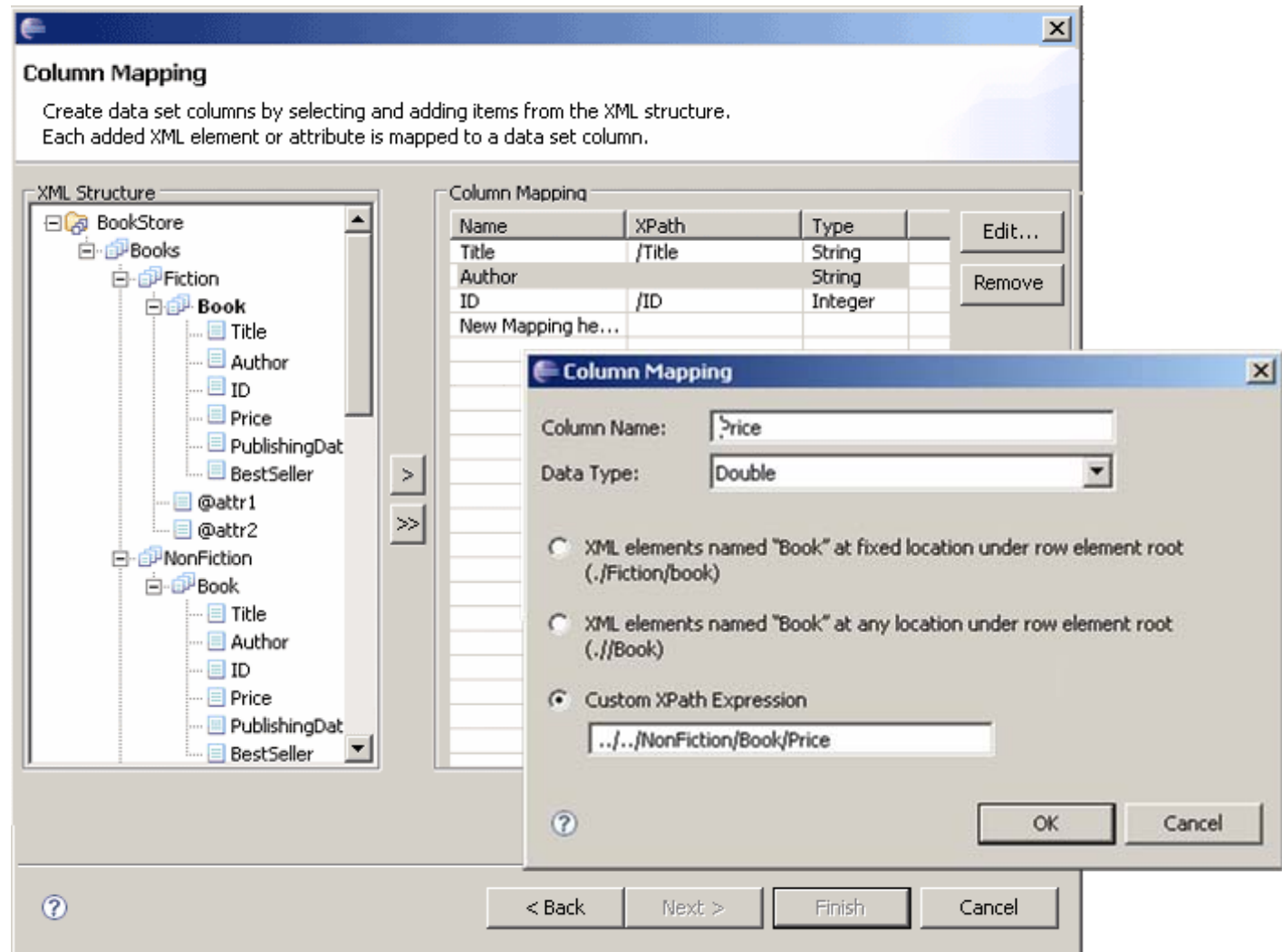


Note: 1. There is a change in description text.

2. An additional button '>>' is added so that when user clicks on the node (Book), and then clicking on '>>' will add all the occurrences of the node to column mapping.

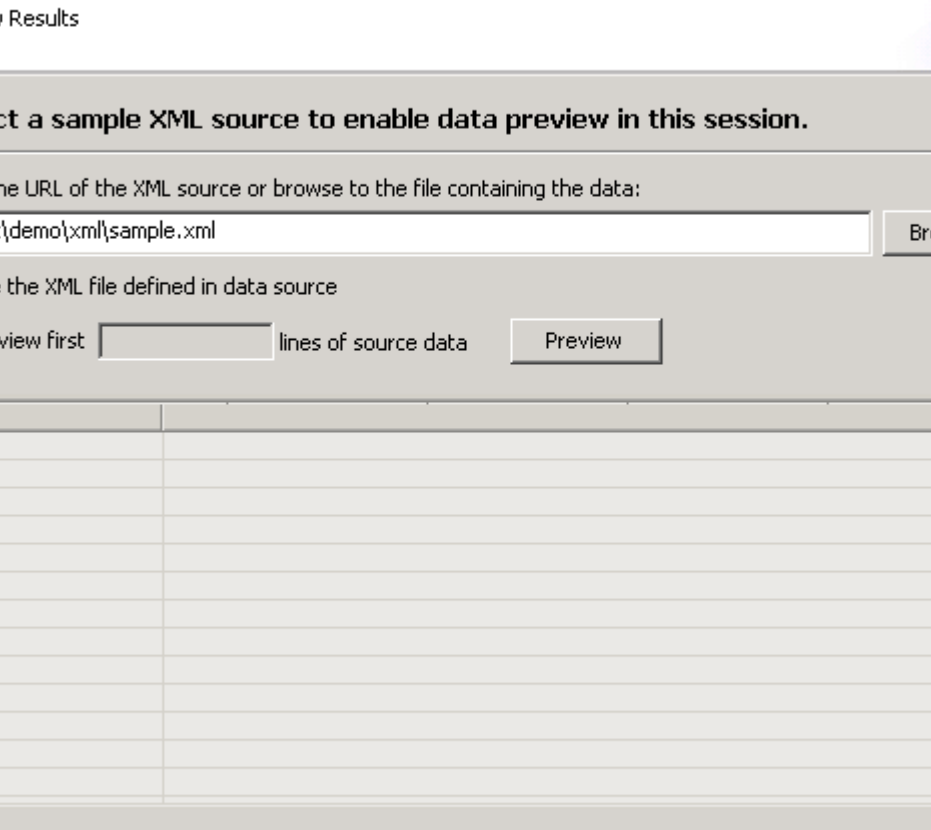
3. Edit, Remove, Up and Down Buttons are added for consistency.

Column Mapping Dialog



- Note:
1. The dialog will appear when user clicks on '>' button
 2. If user clicks on '>>' button all occurrences of the node will get added to Column Mapping. The default selection of all attributes will be absolute path (first option)
 3. Clicking on Add button will allow user to change the mapping individually.

Preview



Preview

Preview Results

Select a sample XML source to enable data preview in this session.

Enter the URL of the XML source or browse to the file containing the data:


E:\birt\demo\xml\sample.xml

☐ Use the XML file defined in data source

☐ Preview first lines of source data

Note: Clicking on Preview button will show the preview in given space.

Preview Results

 Preview X

Preview Results

Select a sample XML source to enable data preview in this session.

Enter the URL of the XML source or browse to the file containing the data:

E:\birt\demo\xml\sample.xml Browse...

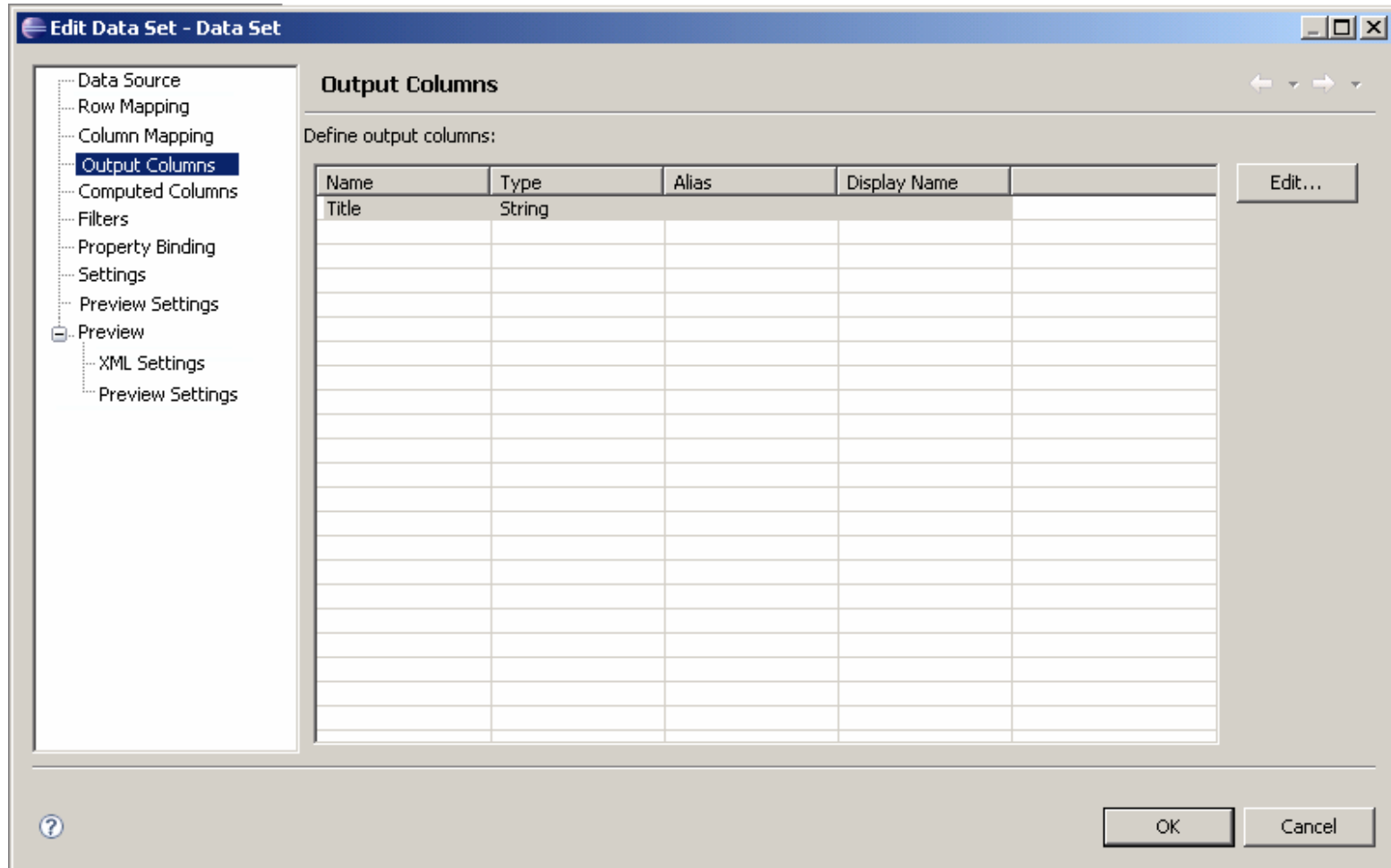
☐ Use the XML file defined in data source

☐ Preview first lines of source data Preview

Title	
The Bourne Identity	
The Bourne Supremacy	
The Bourne Ultimatum	
The Namesake : A N...	
The Fortress of Solit...	
To Kill a Mockingbird	
The Prince	
The Runaway Jury	
The Rainmaker	
A Painted House	

? < Back Next > Finish Cancel

The screen after user clicks finish on the wizard (above)

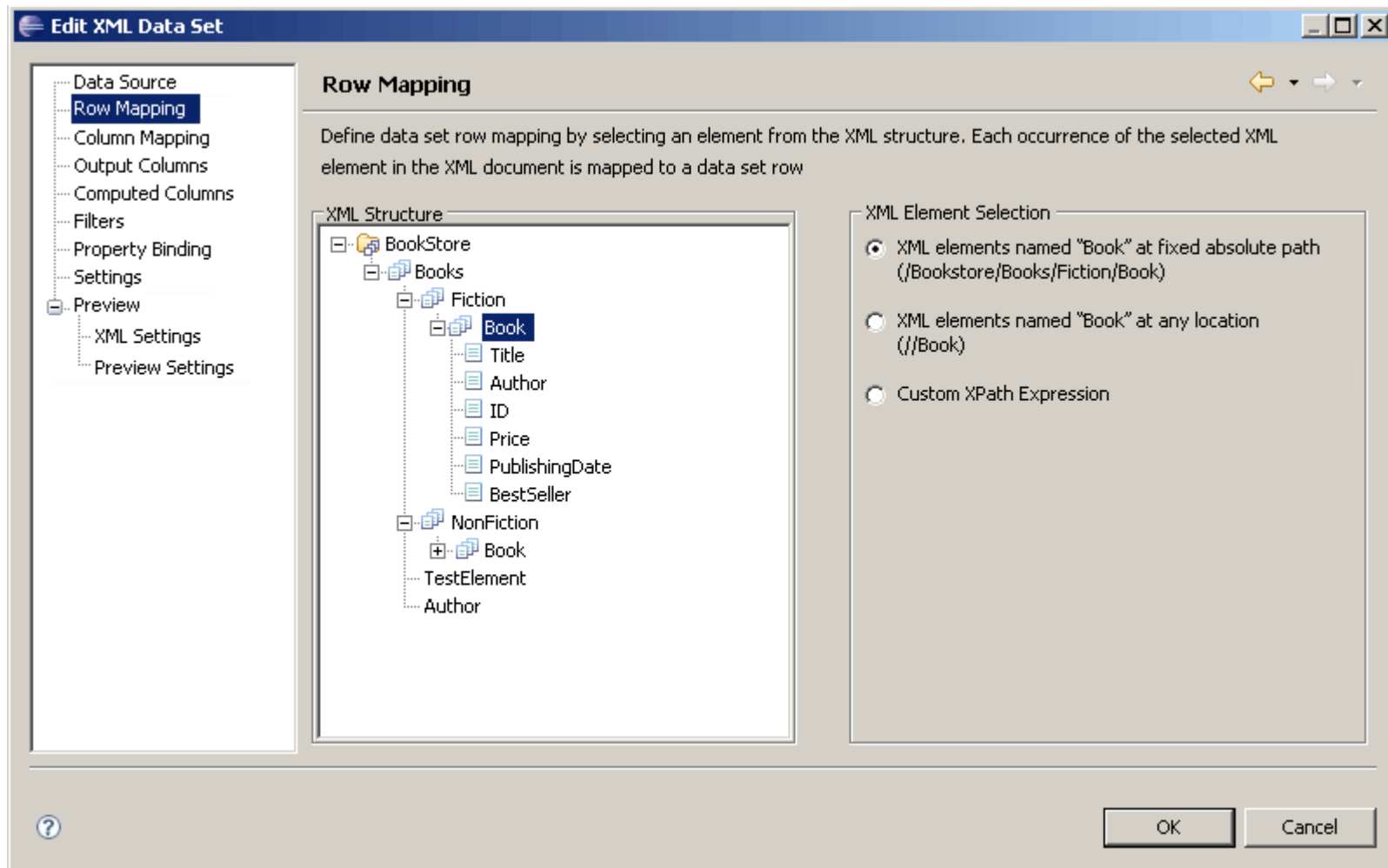


Note:

1. Table Mapping option is renamed to 'Row Mapping'.
2. Preview Settings (DTP XML Dataset) is moved above preview.
3. Preview Results is changed to 'Preview'.

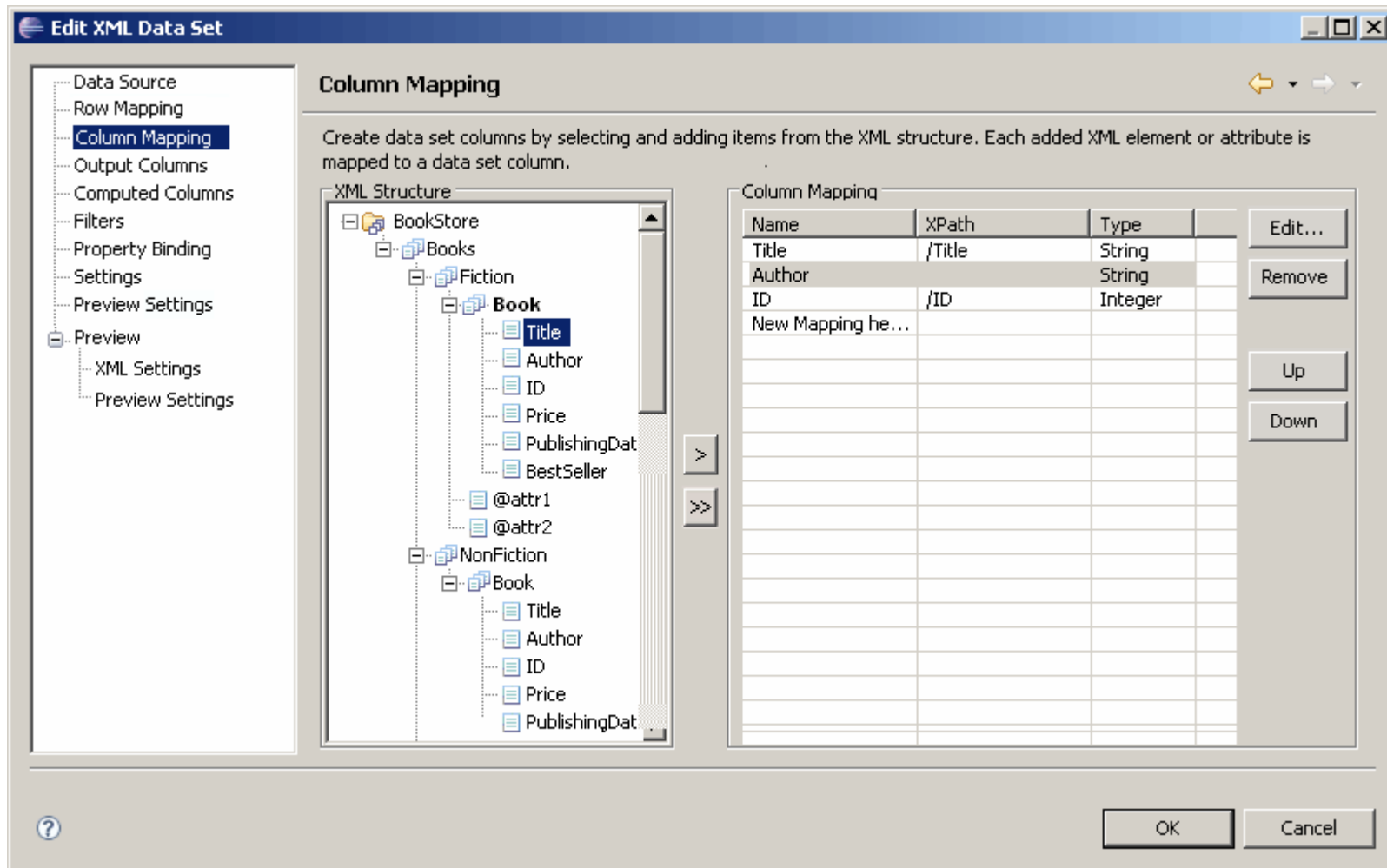
Edit XML Data Set Wizard

Row Mapping



Note: There has been some user confusion over what "Table mapping" means. For clarity, renaming the dialog to "Row Mapping" is being suggested. An additional pop up dialog that asks for XML Element Selection has been removed, and changes to the text is made.

Column Mapping

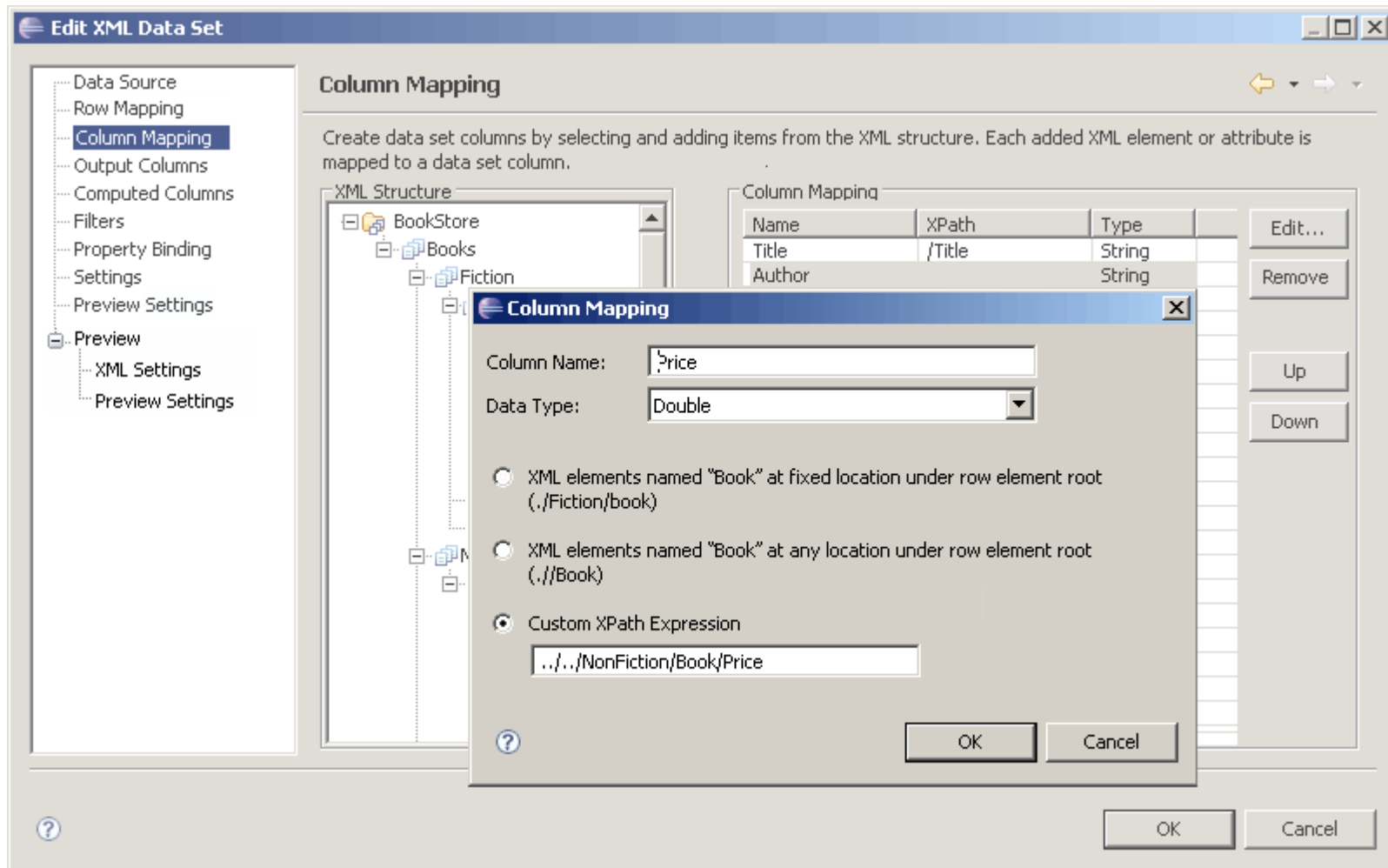


Note: 1. There is a change in description text.

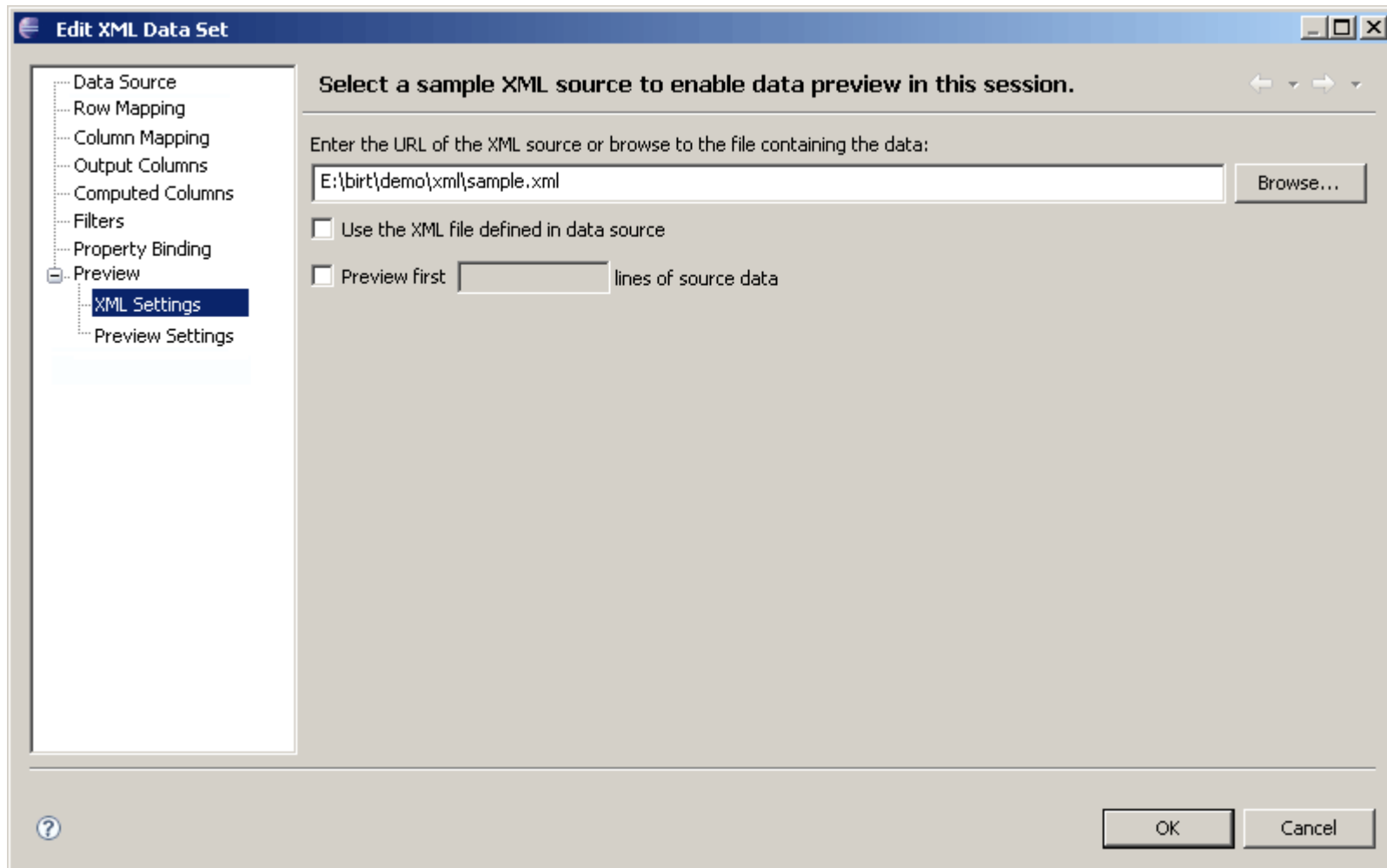
2. An additional button '>>' is added so that when user clicks on the node (Book), and then clicking on '>>' will add all the occurrences of the node to column mapping.

3. Edit, Remove, Up and Down Buttons are added for consistency.

Column Mapping Dialog



Preview Settings



- Note:
1. Table Mapping option is renamed to 'Row Mapping'.
 2. Preview Settings (DTP XML Dataset) is moved above preview.
 3. Preview Results is changed to 'Preview'.