

BIRT Support link to CSS Feature Specification

Author: Rima Kanguri

Document Revisions

Version	Date	Description of Changes
Draft2	03/15/2007	Updates based on review comments
Draft 1	02/21/2007	Initial draft.

1. Introduction	2
2. Use cases	3
2.1 Support link to CSS file in a Report Design File	3
2.2 Support link to CSS file in Report Design Library File	3
3. BIRT Designer Changes	4
3.1 Library Explorer View	4
3.1.1 Copy CSS file into BIRT_RESOURCE_FOLDER	4
3.1.2 Library Explorer View	5
3.2 Support for external CSS in a report design file	6
3.2.1 Include CSS file in to a report design file	6
3.2.2 Outline view changes to show external Styles	7
3.2.3 Apply the style to the report items	8
3.3 Support for external CSS in a report design library file	9
3.3.1 Include CSS in a library file	9
3.3.2 Dialog to select the theme	10
3.3.3 Library Outline View	11
3.4 Include CSS file using Outline View	11

1. Introduction

In BIRT 2.0 importing of CSS style was supported. This allowed user to import styles defined in an external css file into a report design or library file.

For more details please refer to <http://eclipse.org/birt/wiki/index.php?n=BPS.BPS10>

In BIRT 2.2 we plan to enhance this feature to support

- Ability to include one or more external CSS file in a report design
- Ability to include one or more external CSS file in a library file
- User can define local BIRT styles in addition to including external CSS files
- Ability to apply styles defined in the external CSS file to report items in a report design or library.
- Any change in the CSS file, will automatically affect the report at design and runtime.
Note: In design time, when the report design file is reloaded.
- The same restriction as “Import CSS file” applies to “Include CSS file”. For the list of styles and selector supported by BIRT, please refer to the feature specification at <http://eclipse.org/birt/wiki/index.php?n=BPS.BPS10>

The Bugzilla entry corresponding to this feature is

https://bugs.eclipse.org/bugs/show_bug.cgi?id=140619

2. Use cases

The following common use cases are supported.

2.1 Support link to CSS file in a Report Design File

A CSS file contains the following styles: .CorporateBackground, CorporateBlue . A report designer wants to apply the style to some of the Report Items.

Report designer follows the steps below

- Imports the CSS file under folder/subfolder of \$BIRT_RESOURCE_FOLDER
- Includes the CSS file into a report design
- Applies the styles from CSS to the Report Items
- Any change in the CSS file, will automatically affect the report at design and runtime

2.2 Support link to CSS file in Report Design Library File

A report designer has several corporate styles defined in a CSS file; he plans to shares these styles across several report designs.

Report designer follows the steps below

- Includes the CSS file into a theme in the report library file
- Applies the library theme to a report design
- Applies the styles from CSS to report items

2.3 Report design file can reference multiple CSS files

(Note: This applies to report design library file too)

A report designer has several CSS files, he plans to use the styles in several report design

Report designer follows the steps below

- Imports the CSS files under folder/subfolder of \$BIRT_RESOURCE_FOLDER
- Includes several CSS file into a report design
- Applies the styles from the CSS to the Report Items
- Any change in the CSS file, will automatically affect the report at design and runtime

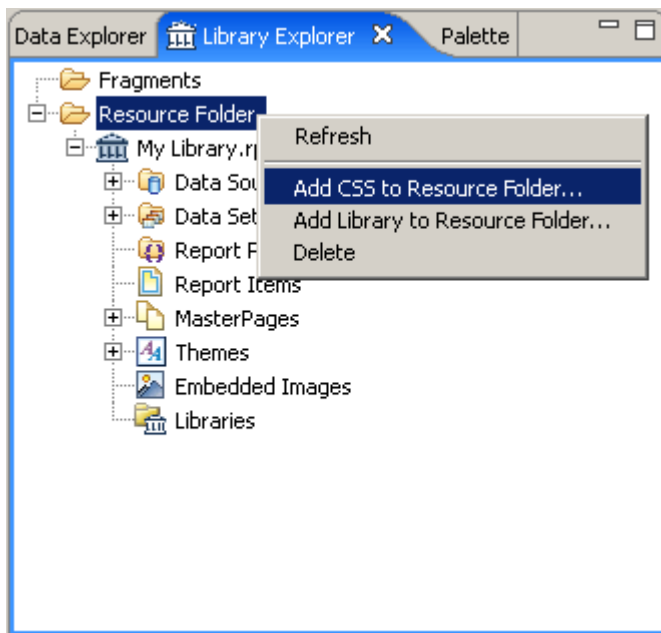
3. BIRT Designer Changes

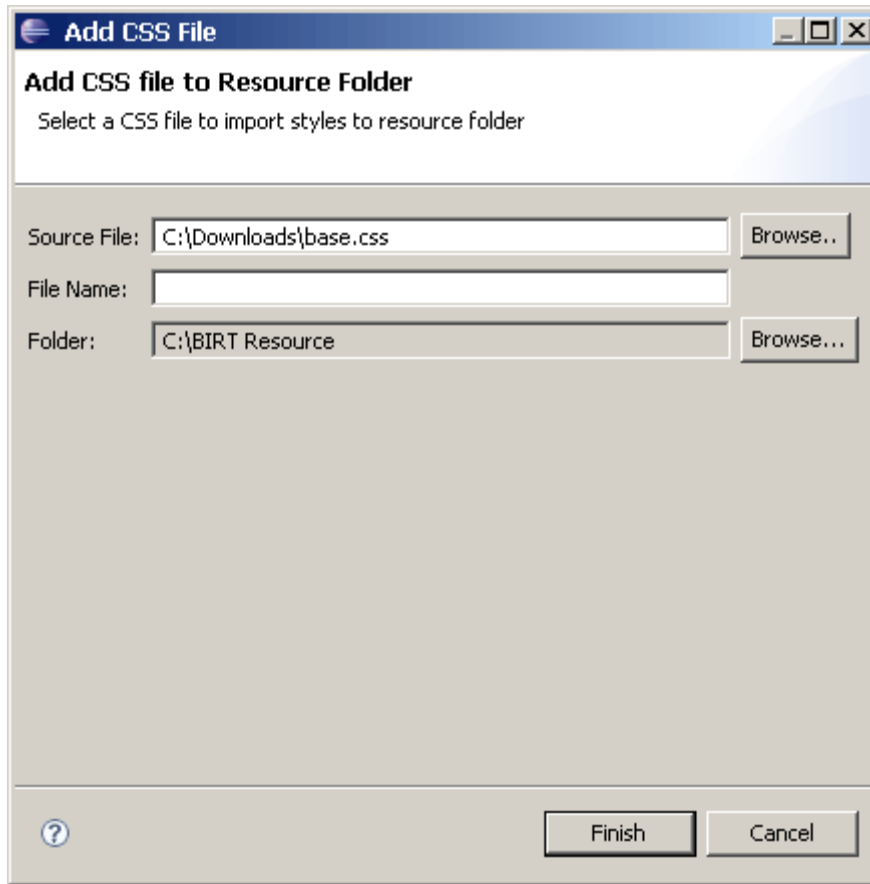
3.1 Add CSS file to Library Explorer View

This section describes the steps to add CSS file to the Library explorer View

3.1.1 Copy CSS file into BIRT_RESOURCE_FOLDER

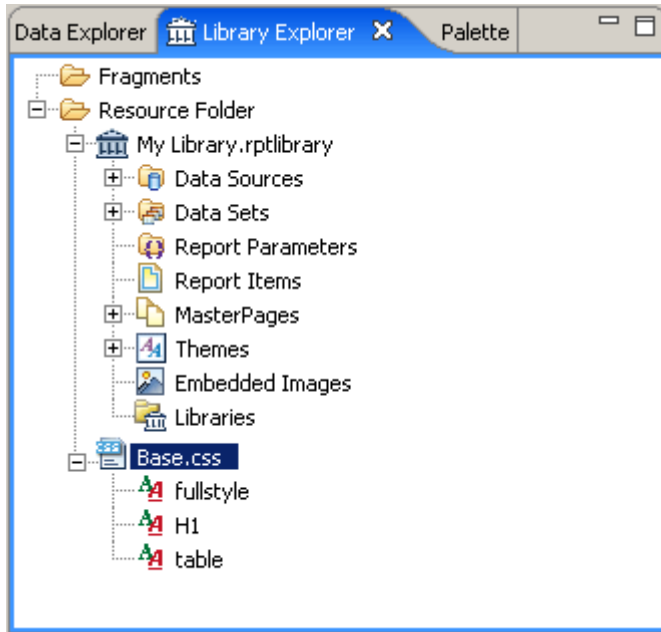
- User adds the CSS file to the BIRT_RESOURCE_FOLDER by clicking on the right click menu and selecting “Add CSS to Resource Folder”





3.1.2 Library Explorer View

Library explore will be modified to support CSS files. The CSS node will expand to list out the styles defined in the CSS file. (Note: Only the styles supported by BIRT are listed)

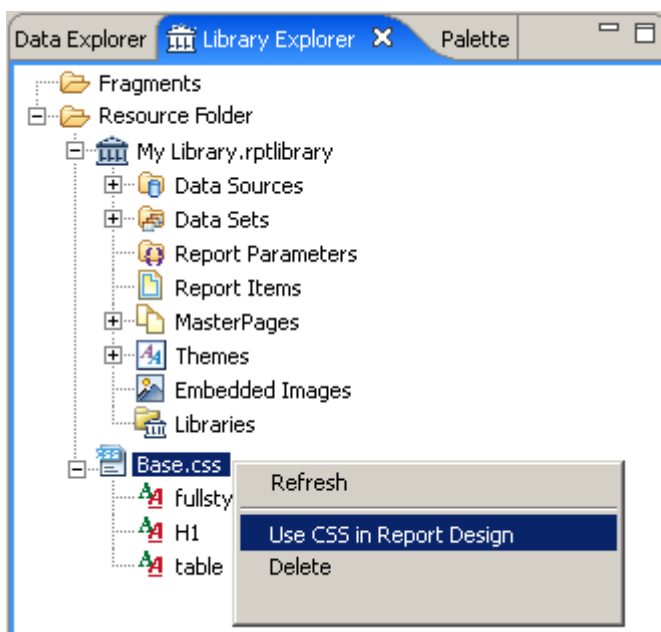


3.2 Support for external CSS in a report design file

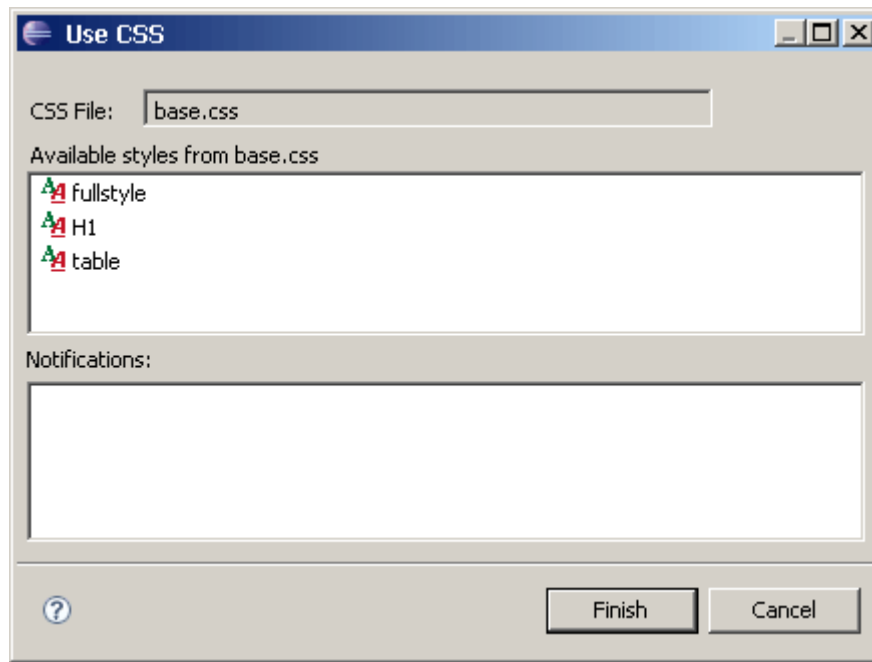
This section explains the steps to

- Use CSS file in to a report design file from Library Explorer View
- How to apply the styles from CSS file to Report Items

Select the CSS file node and click on “Use CSS in Report Design” to include the CSS file in a report design.

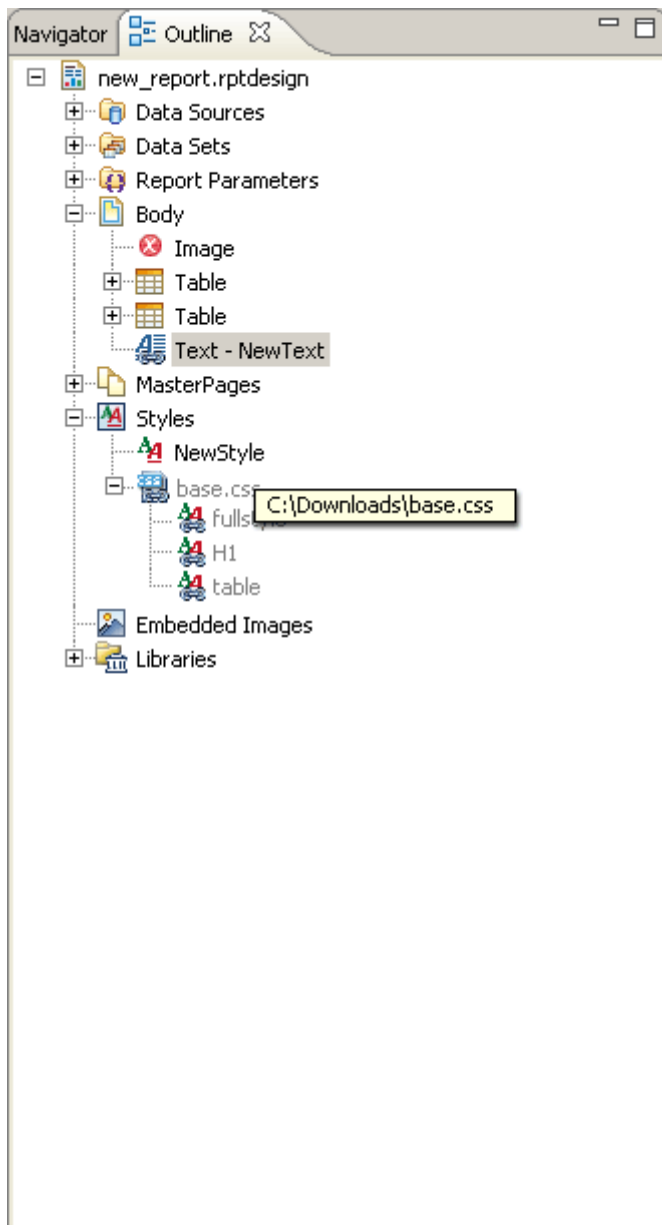


Dialog list the styles available in the CSS file.



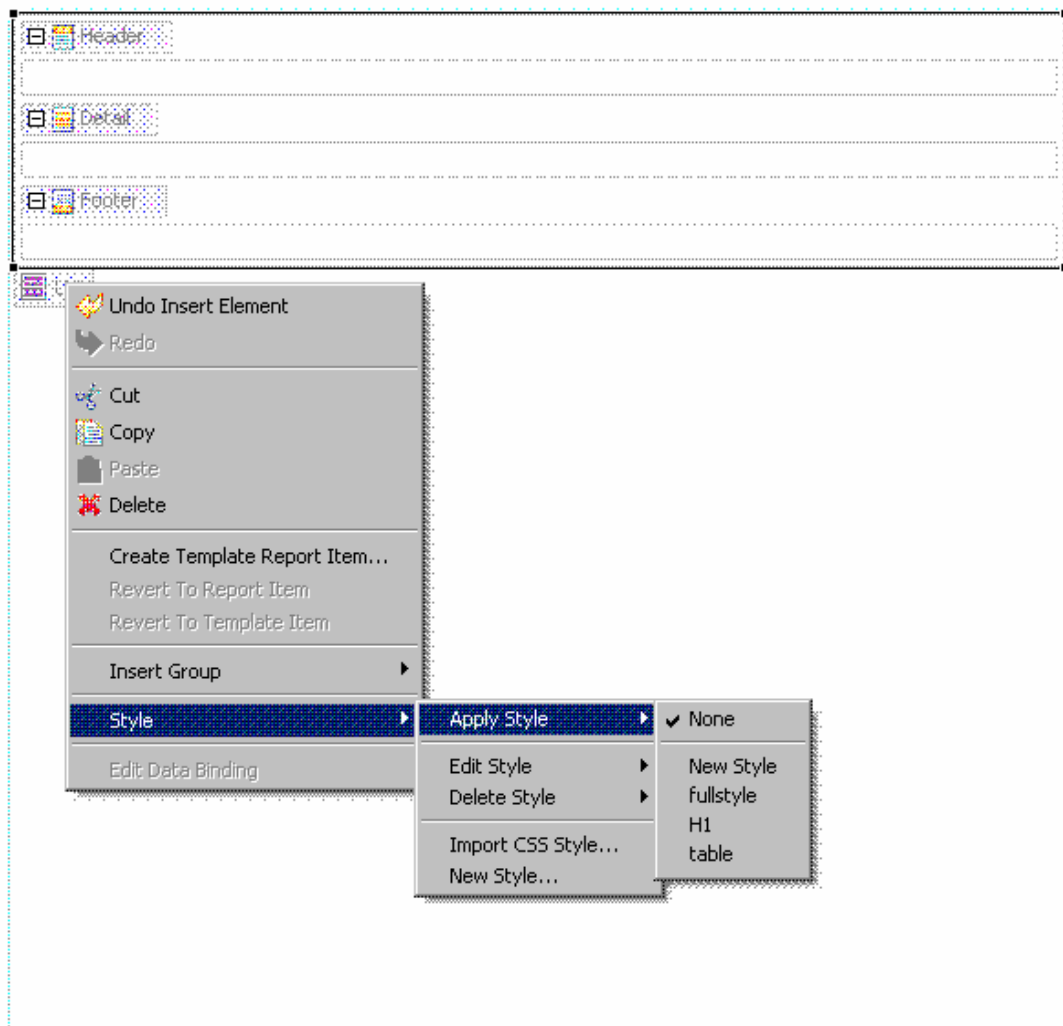
3.2.1 Outline view changes to show external Styles

- The outline view list the styles from the external CSS file
- The styles are grayed to indicate they are not editable.
- User should be able to change the order of the CSS file by dragging and dropping the CSS file withing the Styles node



3.2.2 Apply the style to the report items

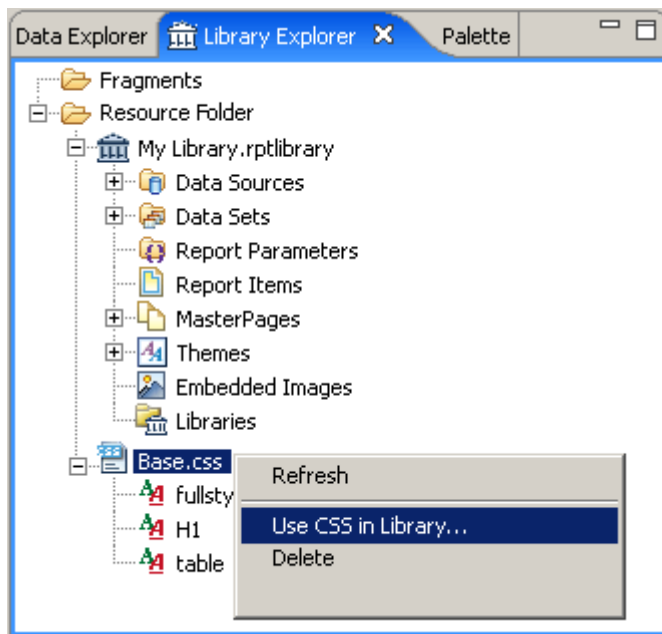
User can apply the styles from external CSS file to any report item similar to BIRT styles.



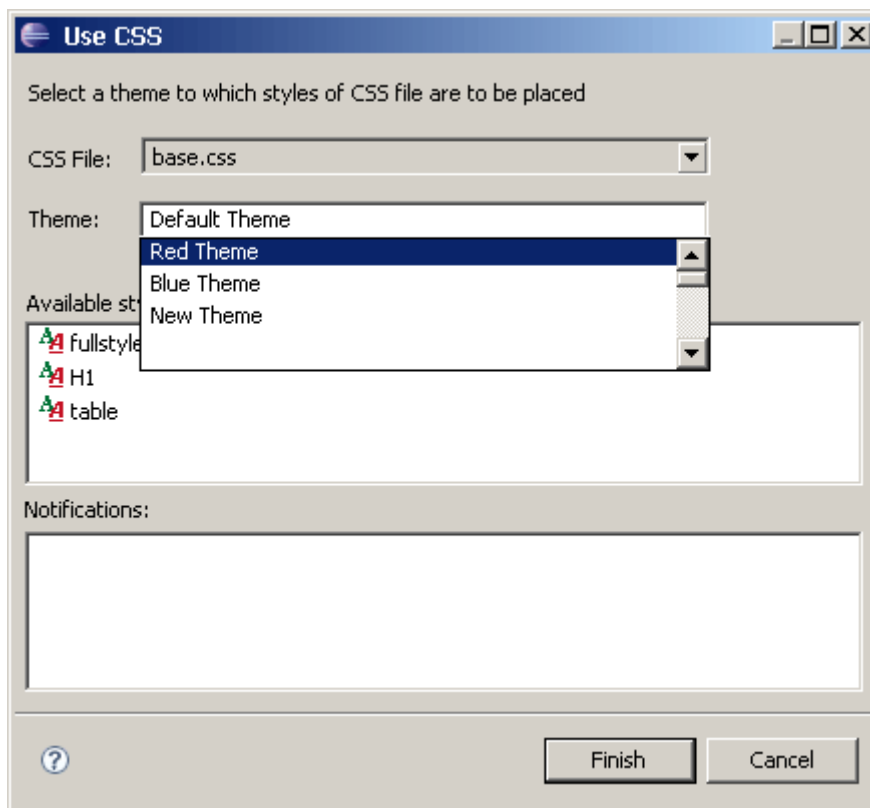
3.3 Support for external CSS in a report design library file

3.3.1 Include CSS in a library file

Click on “Use CSS in Library” in include the CSS file.

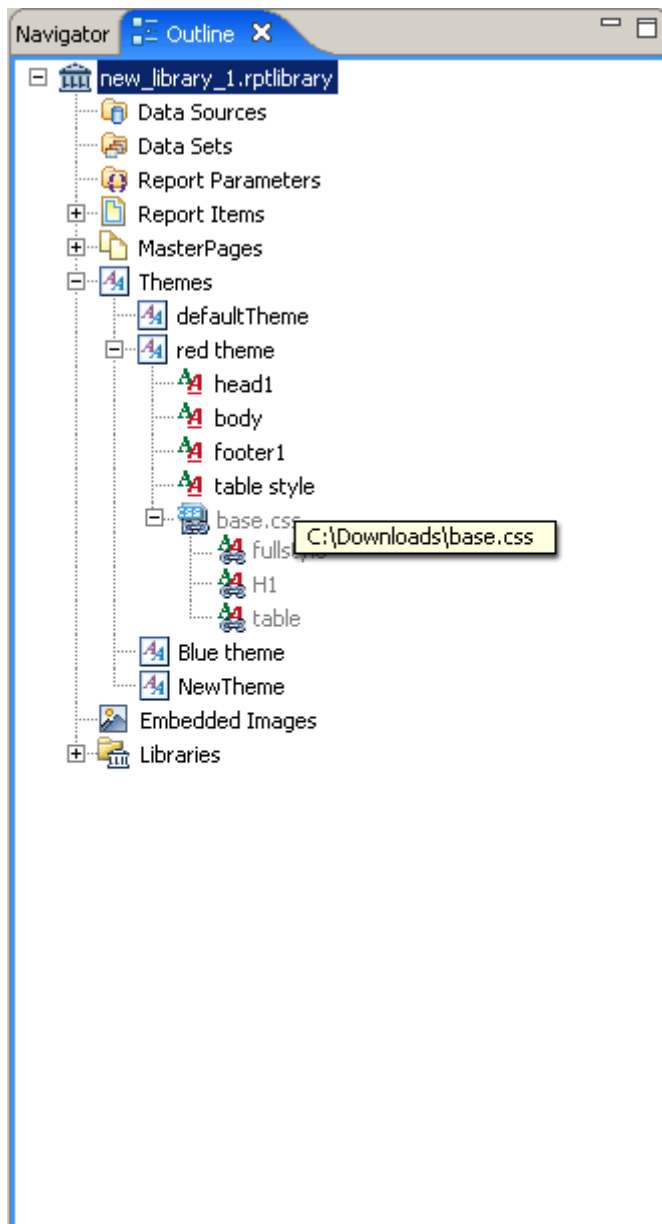


3.3.2 Dialog to select the theme



3.3.3 Library Outline View

- Library Outline view list out the external CSS file styles
- User should be able to change the order of the CSS file by dragging and dropping within the Themes node

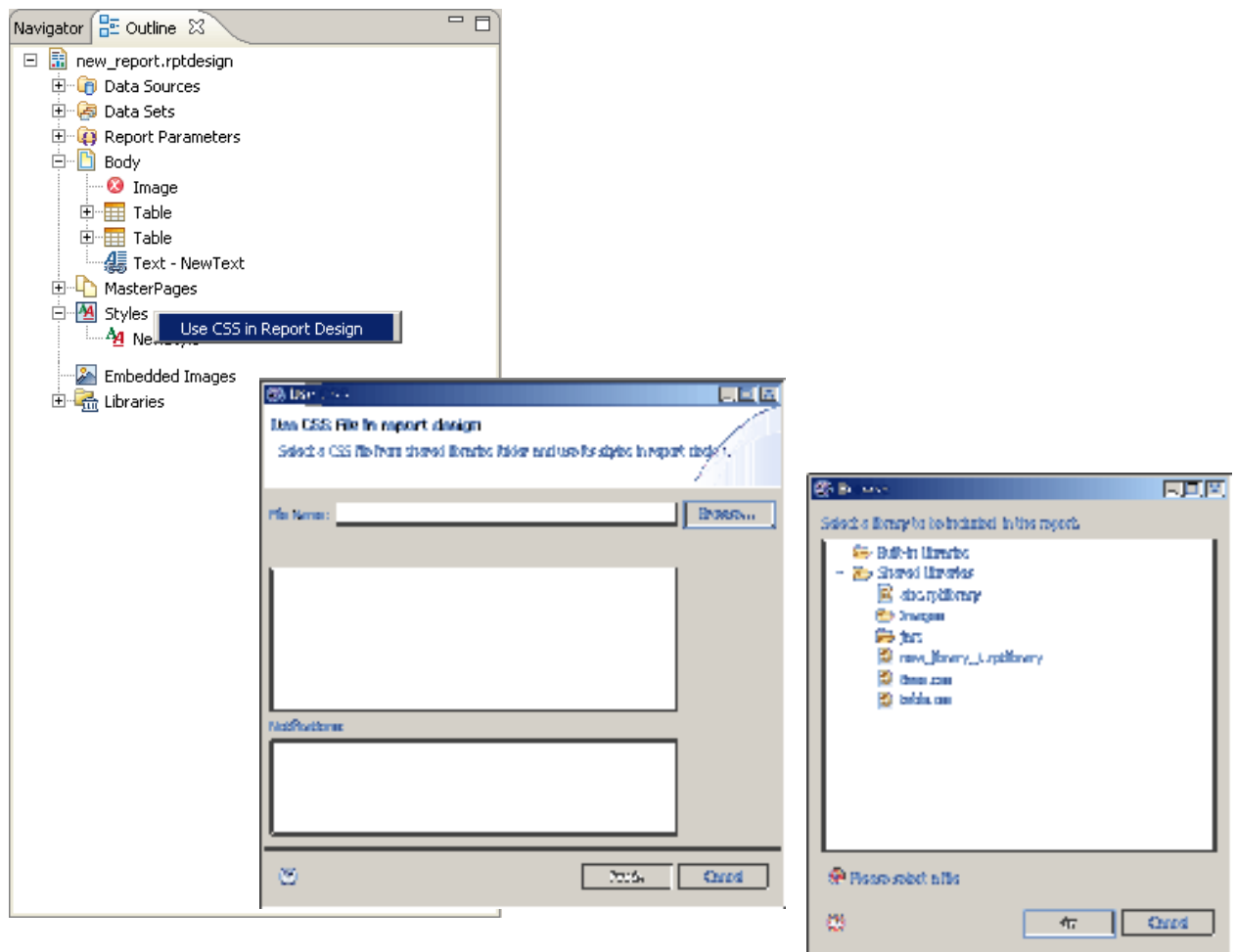


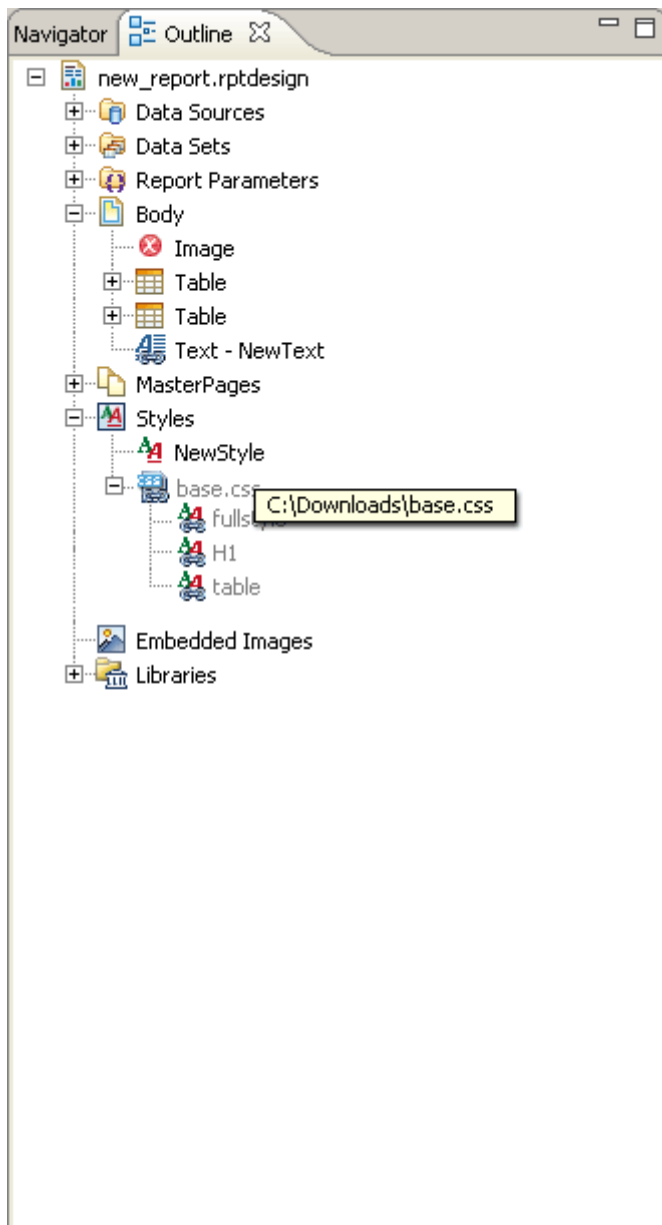
3.4 Alternative approach to Include CSS file using Report Design Outline View

User can also include an external CSS file in a Report design using the Report design Outline view

- Select the "Styles" node

- Click on “Use CSS in Report Design”



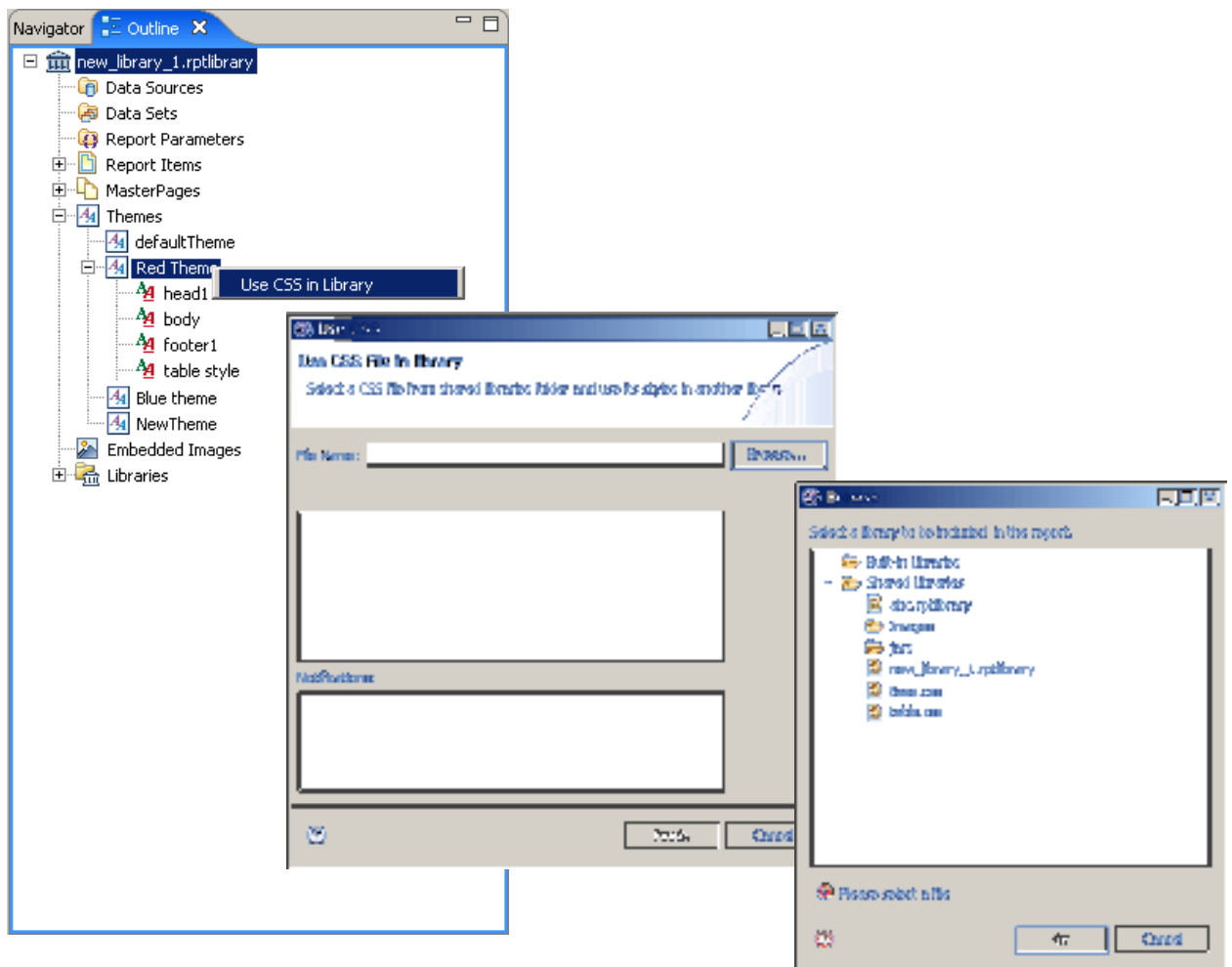


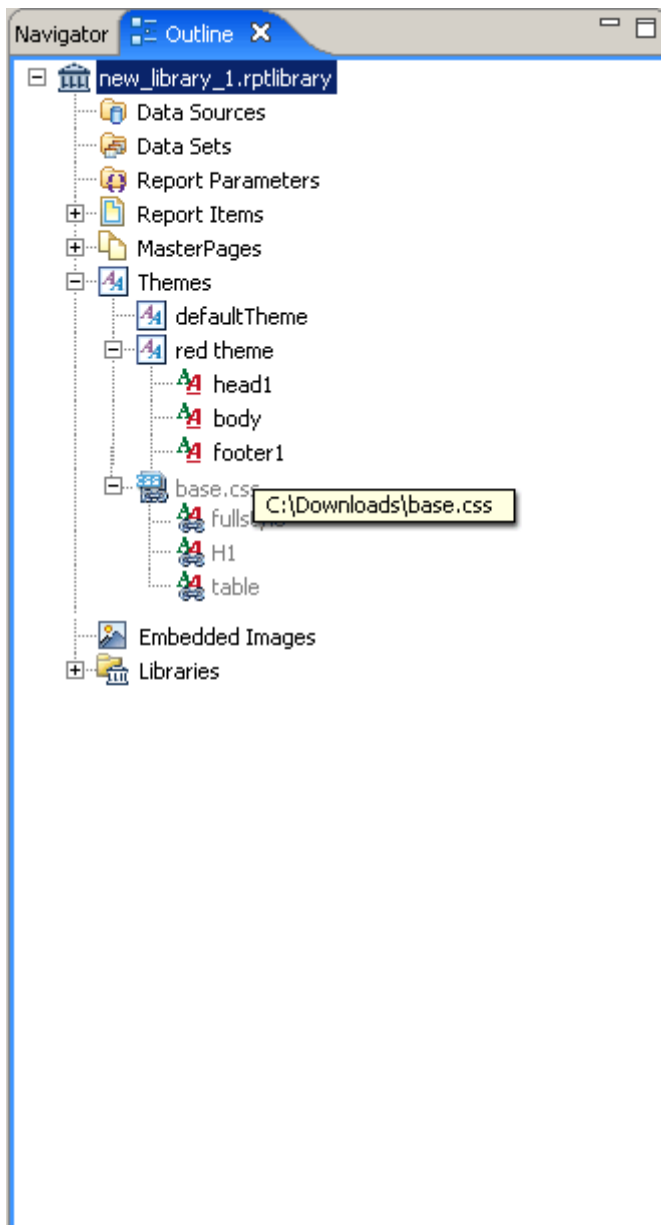
3.5 Alternative approach to Include CSS file using Library Outline View

User can also include an external CSS file in a Library using the Library design Outline view

- Select the “Red Themes” node
- Click on “Use CSS in Library”

Note: Clicking on “browse” will allow user to browse the BIRT_RESOURCE_FOLDER





4. BIRT Model

BIRT Mode will be enhanced to support external CSS file

- Support for external CSS file in report design
- Support for external CSS file in report design library themes
- Support to allow user to apply external Style to a report item.
- If a report design includes multiple CSS files, and the style name repeats in multiple CSS file then the style defined in last CSS file will take precedence, i.e the order in

which CSS file is included is important. In the outline view the CSS files are listed in the order they are included.

- As user can define local BIRT styles in addition to including external CSS files. If a style name exists in the local style list and in an external CSS file, the local style will override; the style definition from the CSS file is ignored in this case.